

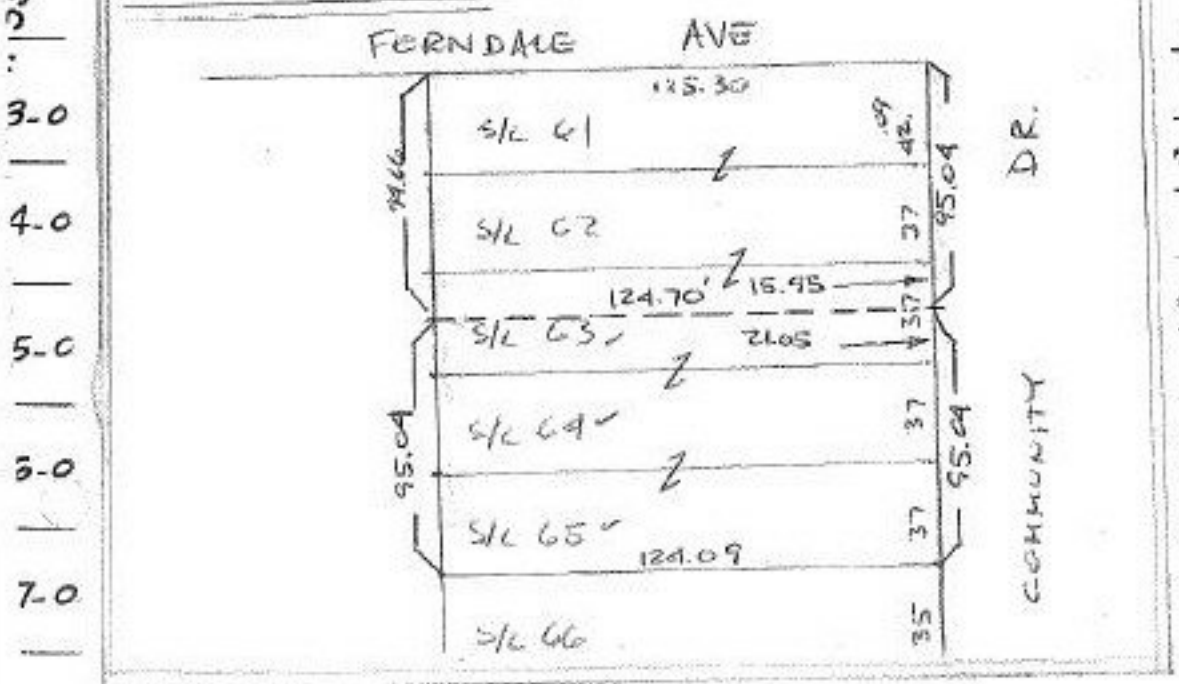
113-004	75-024	62-007	52-023	115-036	173
		102.63	127.80	114	174-055
114-010	74-025	63-010	53-026	113-015	175-
		103.10	127.55	112-016	176-041
115-011	73-026	64-011	54-027	111-017	177-042
		103.56	127.27	110-018	178-043
116-012	72-027	65-012	55-028	109-019	179-044
		104.03	127	108-02	
117-013	71-028	66-013	56-029		
		104.49	126.74		
118-014	70-029	67-014	57-030		
102	102	104.96	126.47		
119-015	69-030	68-015	58-031		
91.94	92.06	93.56	126.21		
			125.95		
			60-033		
			125.68		

FERNDALE AVE

102	102	106.04	125.30	106-0	130
27-001	52-014	53-001	61-014	106-0	
	74.74	M	125.03	105	
28-002	51-015	106.73	124.79	104-00	
	74.74	W	124.50	103	
29-003	50-016	107.3	124.32	102-04	
		B	124.09	101	
30-004	49-017	55-003	65-018	100-00	
		107.87	124.09	99	
31-005	48-018	56-004	66-019		
		108.44	123.86		
		57-005	67-020		
			123.64		
			68-021		
			123.42		

P.P. NO. 03-00-041-117-
 PRIOR INST: C.R. 878/868, 904
 CLOSURE: C-1 F.M.P. C-1/96, 920
 SURVEYED BY: RICHARD ROSEBECK
 G.2748. C-1/106, 184 REG. SURVEYOR

DETAILS NOT TO SCALE



9-14-94

20916

APPROVED
 LORAIN CO.
 MAP DEPT.

DATE 7-6-94

PAGE 3-00-041

BY CAROLYN FRANCIS

VOG # 20916