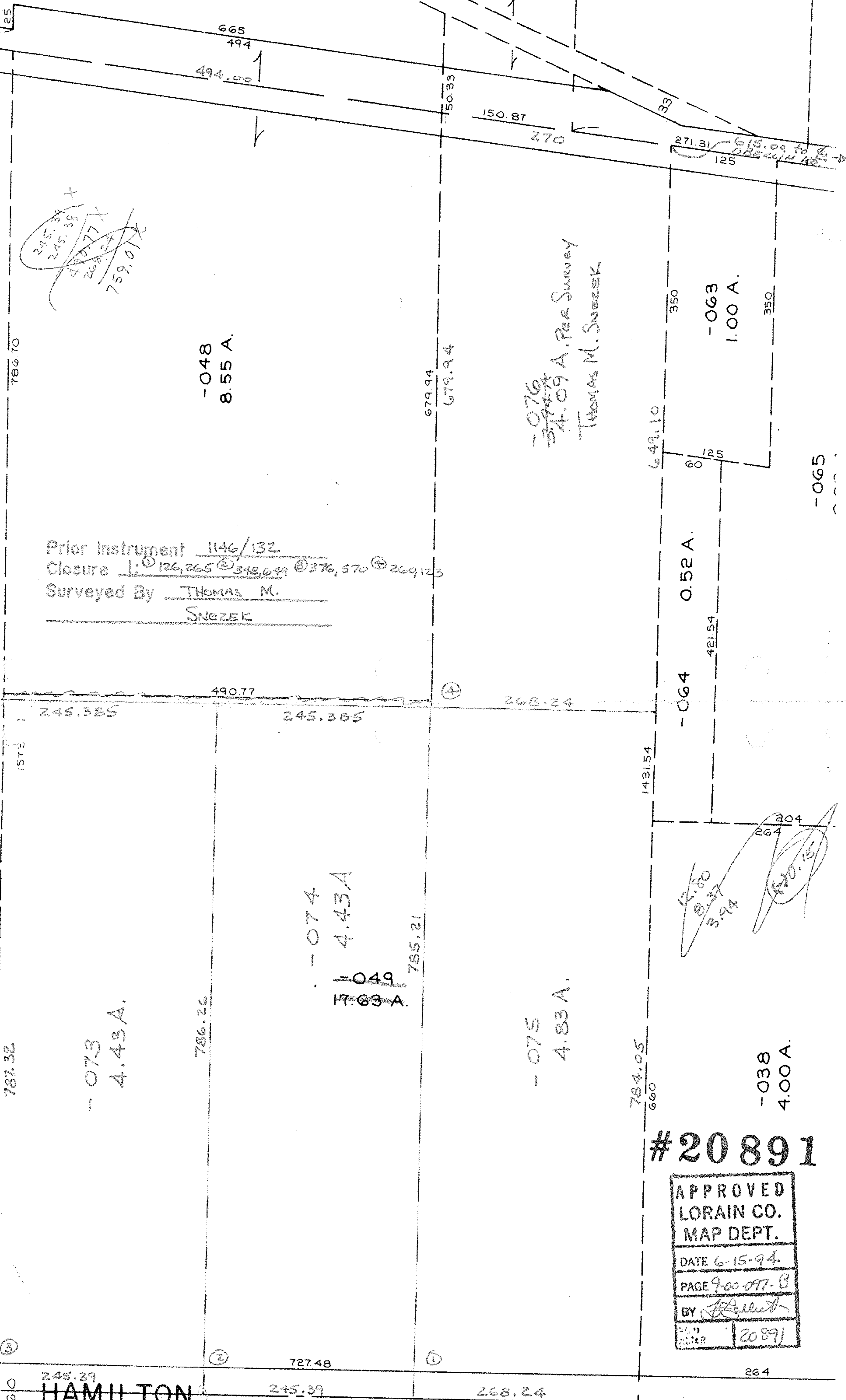


SEE 9-00-097-A

SONS

1.60 A.



786.70

1573

787.32

③

0

0

~~245.39~~  
~~245.38~~  
~~490.77~~  
~~268.24~~  
~~759.01X~~

-048  
8.55 A.

Prior Instrument 1146/132  
 Closure 1: ① 126,265 ② 348,649 ③ 376,570 ④ 269,123  
 Surveyed By THOMAS M.  
SNGZEK

490.77

245.385

245.385

268.24

-073  
4.43 A.

786.26

-074  
4.43 A

-049  
17.63 A.

785.21

-075  
4.83 A.

784.05  
660

-038  
4.00 A.

679.94  
679.94

-076  
~~379.44~~  
 4.09 A. PER SURVEY  
 THOMAS M. SNGZEK

649.10

-063  
1.00 A.

0.52 A.

-064

421.54

1431.54

12.80  
 8.37  
 3.94  
 1570.15

-065

HAMILTON

727.48

245.39

268.24

264

#20891

APPROVED
LORAIN CO.
MAP DEPT.
DATE 6-15-94
PAGE 9-00-097-B
BY <i>[Signature]</i>
20891

SEE 9-G