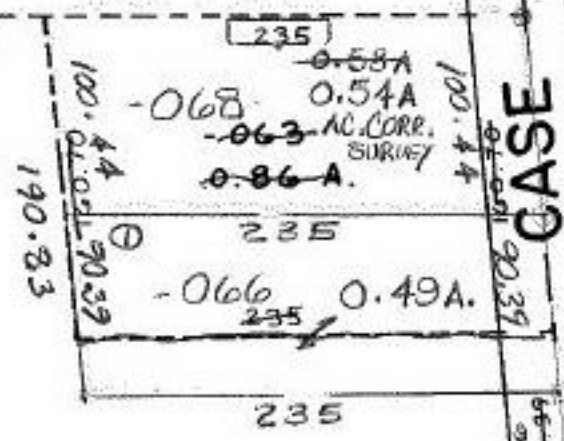


Pt. - 019
Pt. 71.45 A.

W Line 250.16

1125.61

-067
-062
7.04 A.
6.88 A



936.82
1317.62

P.P.NO. 07-00-043-000-
 prior inst; O.R.37/363
 CLOSURE: 1 0.49 ac. 1:INF.
 2 6.88 ac. C=1:637,199
 3 0.54 ac. C=1:INF.
 SURVEYED BY: DANE A.
 HAPONEK REG. SURVEYOR
 PRIOR INST: O.R.76/773

1393.05

--A

BARRES RD.

SN 6/23/94

20852

APPROVED
 LORAIN CO.
 MAP DEPT.

DATE 5-17-94

PAGE 7-00-043 C

CAROLYN
FRANCIS

WORD # 20852