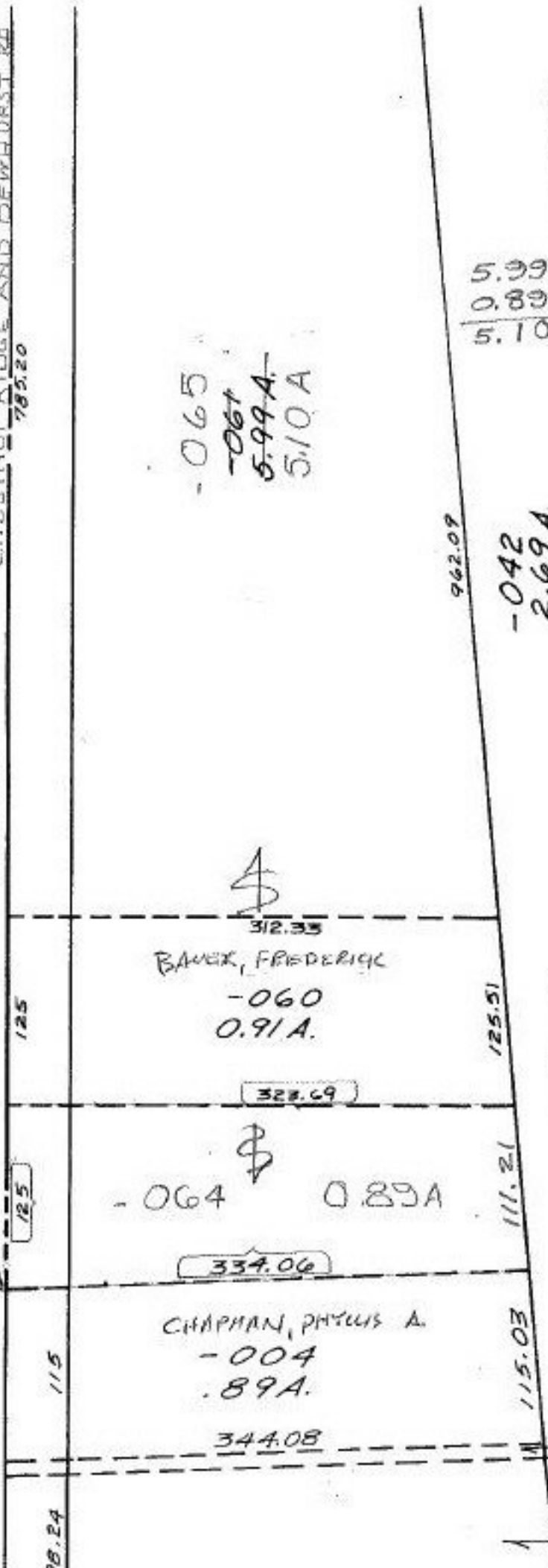


SEE 10-D

DEWHURST RD.

1035.20' FROM ~~THE~~ R.I.S. FD INTERSECTION OF CHESTNUT RIDGE AND DEWHURST RD. 785.20



-065
-061
5.99A
5.10A

5.99A
0.89A
5.10A

BY PASS

-042
2.69A

-005
4.18A

-006
6.31A
1275.75

P.P. NO. 09-00-092-000
PRIOR INST: O.R. 205/729
CLOSURE: C-1: INF.
KSA (SURVEYED BY:)

AUG 5 1994

20844

APPROVED
LORAIN CO.
MAP DEPT.
DATE 5-13-94
PAGE 11-00-092A
CAROLYN
BY FRANCIS
VOID
DATE # 20844

928.62

-024
2.53A