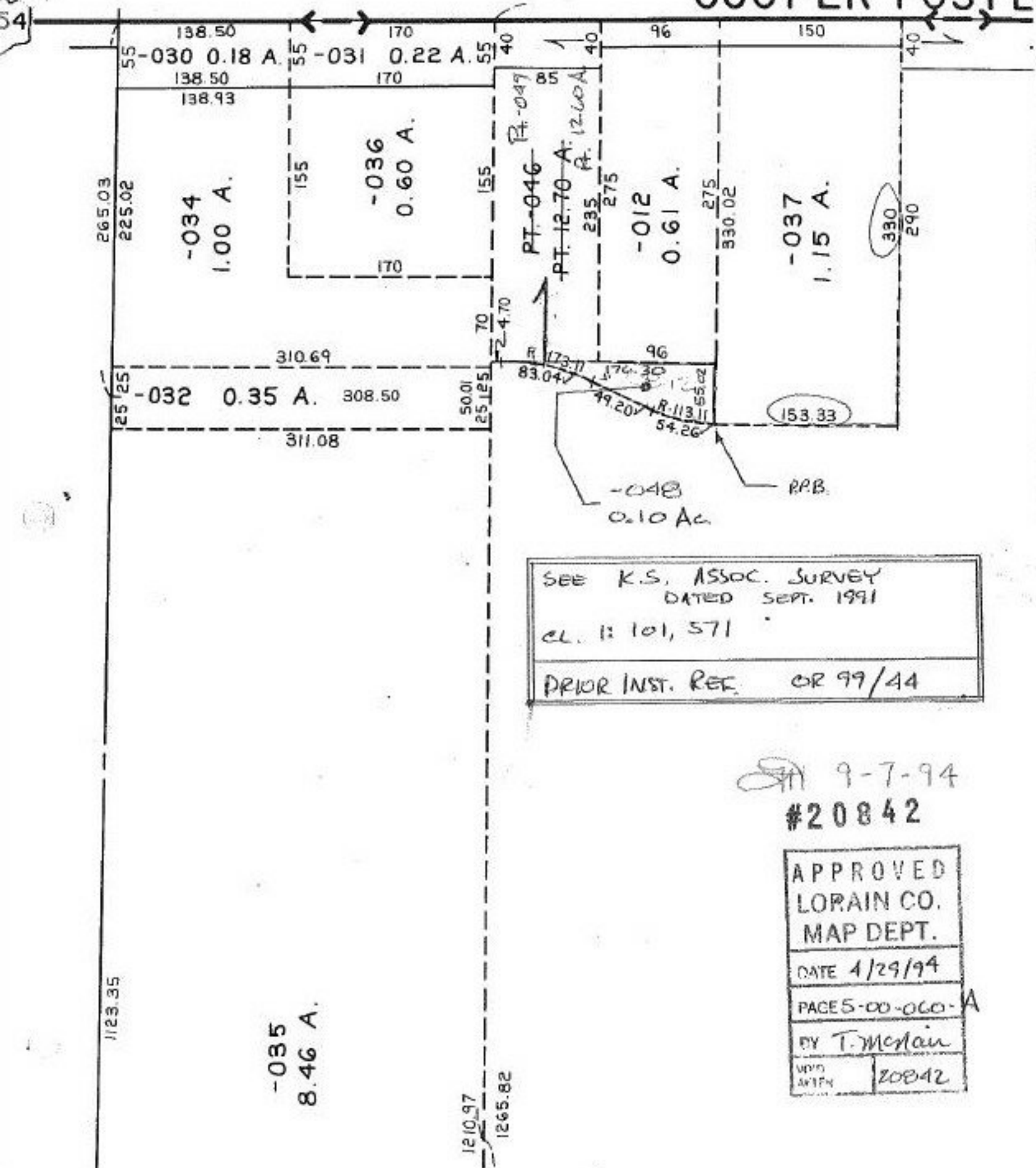


# COOPER FOSTE



SEE K.S. ASSOC. SURVEY  
DATED SEPT. 1991  
CL. 1: 101, 571  
PRIOR INST. REC. OR 99/44

9-7-94  
#20842

APPROVED	
LORAIN CO.	
MAP DEPT.	
DATE 4/29/94	
PAGE 5-00-060-A	
BY T. McMain	
W/P	20842

-035  
8.46 A.

1210.97  
1265.82

265.03  
225.02

1123.35

25.25

50.01  
25.125

55

138.50  
138.50  
138.93

55

170  
170

55

40

PT-049

85

PT-12.70 A.

40

235

PT-12.60 A.

275

96

150

40

-034  
1.00 A.

-036  
0.60 A.

-012  
0.61 A.

-037  
1.15 A.

-032

0.35 A.

310.69

308.50

311.08

70

24.70

R-173.11

83.04

176.30

96

55.02

R-113.11

54.26

153.33

-048

0.10 Ac.

R.P.B.

330

290