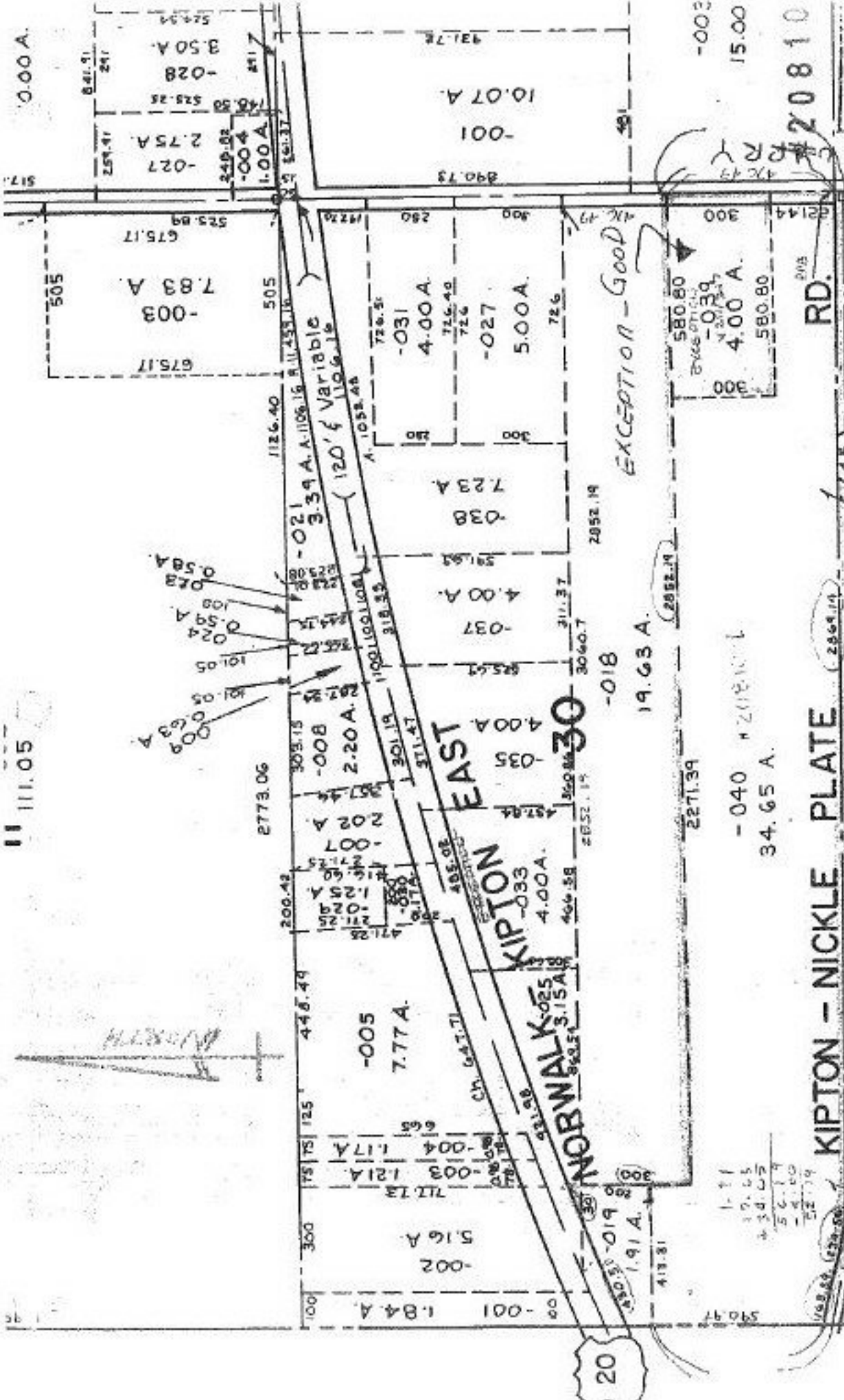


# DEED CHECK

APPROVED  
 LORAIN CO.  
 MAP DEPT  
 DATE 7-22-94  
 PAGE 14  
 BY C.E. FRANCIS



**DEED CHECK**

APPROVED  
 LORAIN CO.  
 MAP DEPT  
 DATE 7-22-94  
 PAGE 14-A  
 BY CAROLYN FRANCIS  
 # 20810-B

DEED CHECK LEGAL DESCRIPTION READS TO THE NORTH LINE OF  
 KIPTON-NICKLE PLATE ROAD. ACREAGE LISTED ON DEED  
 INCLUDES THE NORTH 1/2 VACATED KIPTON-NICKLE PLATE RD.  
 NORTH LINE OF R.N.P. RD IS THE SOUTH LINE OF O.R. NO. 10.  
 LEGAL NEEDS TO INCLUDE NORTH 1/2 VACATED  
 NICKLE-PLATE RD.  
 VAC. ST. IS LOCATED IN O.L. 31 ADD TO LEGAL.

14-00-0350-000-019, 040

#20810

RD.

KIPTON - NICKLE PLATE

VAC COMM. RES. 77-11

-040 + 20810  
 34.65 A.

EXCEPTION - GOOD

-018

19.63 A.

30

2271.39

2852.19

3060.7

311.47

318.33

326.51

330.19

335.14

580.80

0.39

4.00 A.

30

580.80

30

30

30

30

30

30

30

30

30

30

30

30

30

30

30

30

30

30

30

30

11 111.05

0.00A.

517.

505

675.17

7.83 A

-003

675.17

525.89

257.41

841.51

241

525.25

-028

3.50A

525.25

2.75A

-027

249.02

-004

1.00A

46.50

525.25

241

525.25

241

525.25

241

525.25

241

241