

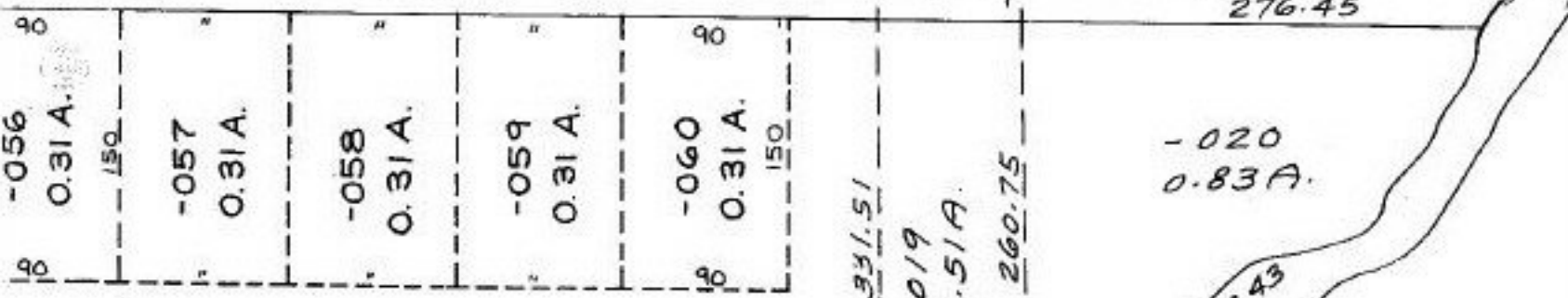
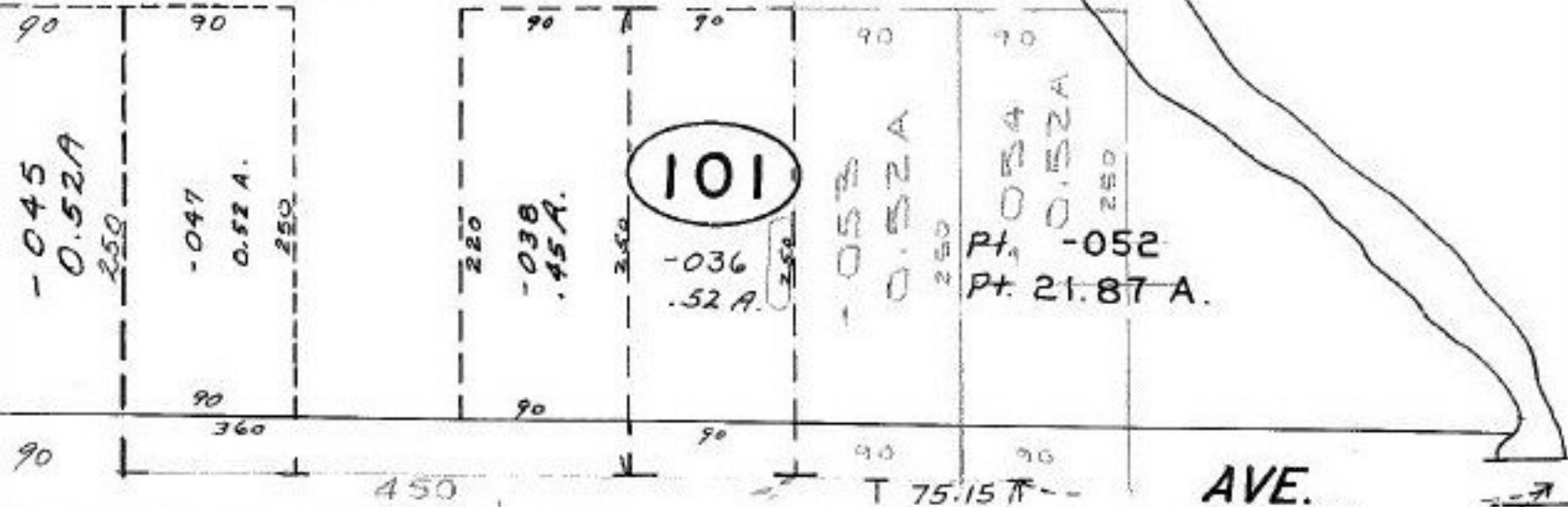
21.87A
 0.52A

 21.35A
 -52A

 20.83A

Pt. 055
 Pt. 20.83A

Beaver



AVE.
 276.45

-020
 0.83A

331.51
 -019
 0.51A
 260.75

367.43

Creek

P.P.NO. 05-00-018-101-
 PRIOR INST: DV.960/996
 CLOSURE: 0.52 ac C-1: INF.
 SURVEYED BY: ARNOLD KOEPP
 REG. SURVEYOR

Pt. -061
 Pt. 18.09A.

9-7-94
 20807

APPROVED
 LORAIN CO.
 MAP DEPT.
 DATE 4-14-94
 PAGE 5-00-018-A
 BY CAROLYN FRANKS
 VOID # 20807