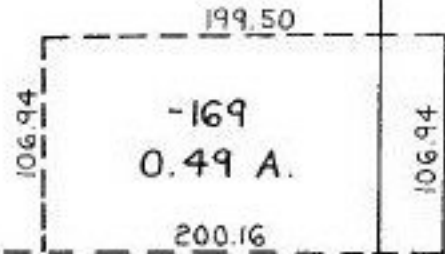


PT. -168
PT. 10.56 A.



132.29

106.94

83

117.67
117.73

PT. -041

PT. 5.50 A.

2034.14 OBS.

2036.09 REC.

1875.14

262.10

44-00

WOOSTER AVON LAKE

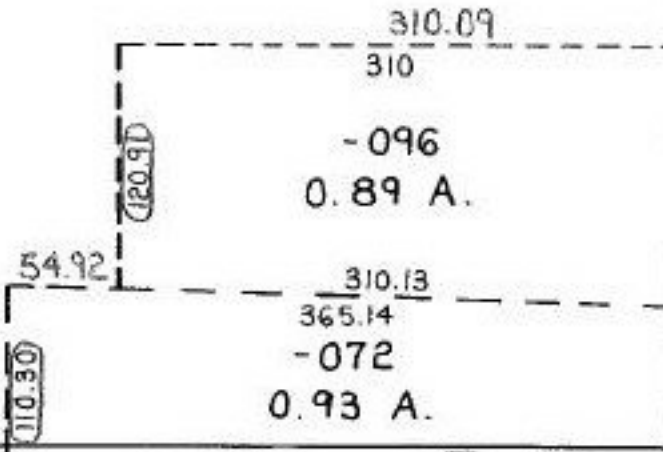
130

100

PT. -097

~~PT. 18.54 A.~~

PT. 19.37 A.



120.91

110.30

1503.82

365

SURVEY NAIL

RD #20805-A 9-9-94

R.R.S.

SEE 7-B

ACREAGE CORRECTION PER SURVEY
 BY: CHARLES A. KERG
 CLOSURE 1:985, 068

ACREAGE CORRECTION

APPROVED
 LORAIN CO.
 MAP DEPT.
 DATE 4/20/94
 PAGE 4-00-013-1F
 BY T. HOLLIS
 VOID AFTER 20805-A