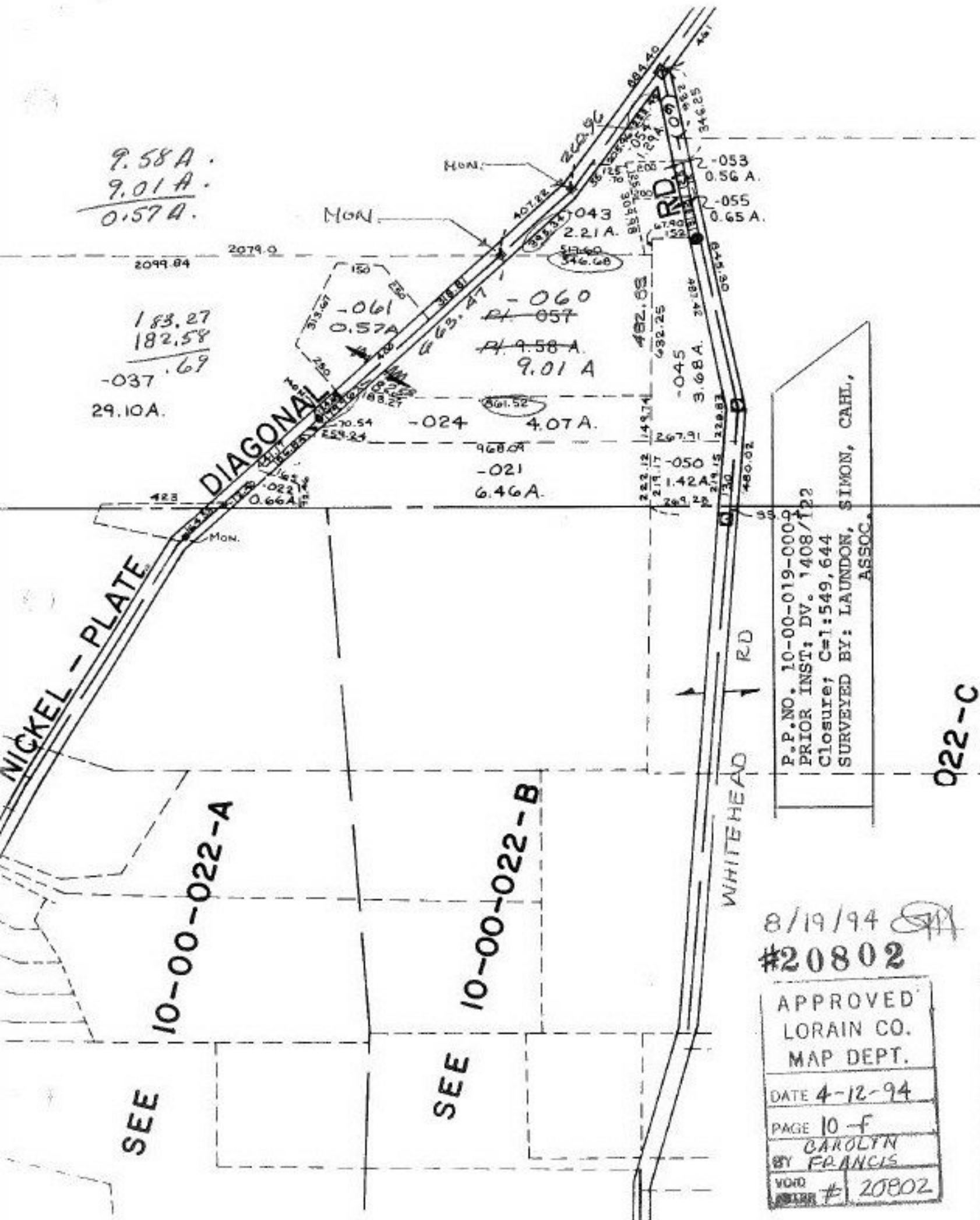


9.58 A.
 9.01 A.
 0.57 A.

183.27
 182.58
 -037.69
 29.10 A.



SEE 10-00-022-A

SEE 10-00-022-B

P.P. NO. 10-00-019-0002
 PRIOR INST: DV. 1408/122
 Closure: C=1:549,644
 SURVEYED BY: LAUNDON, SIMON, CAHL,
 ASSOC.

8/19/94
 #20802

APPROVED
 LORAIN CO.
 MAP DEPT.
 DATE 4-12-94
 PAGE 10-F
 BY CAROLYN
 FRANCIS
 WORD # 20802

022-C