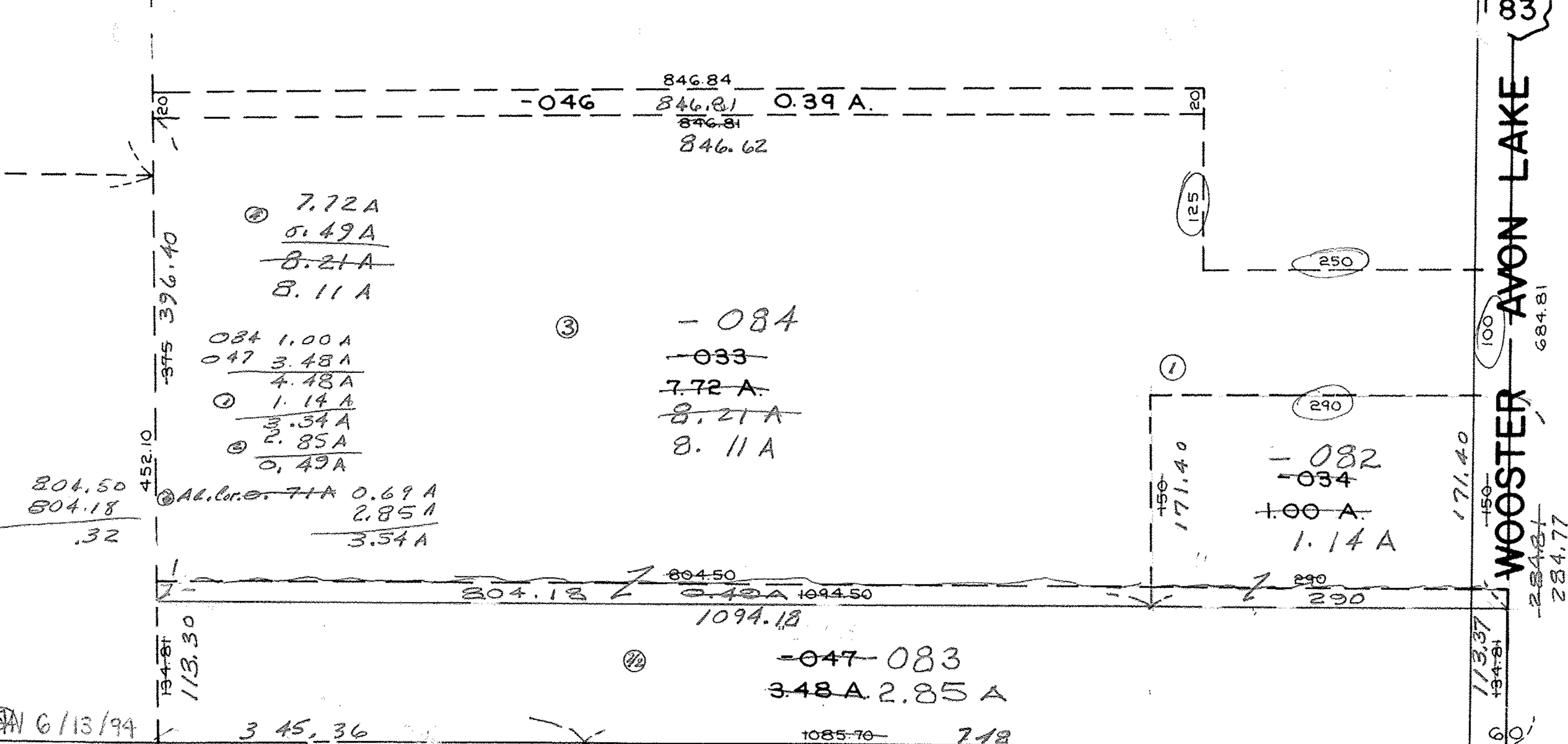


AVON LAKE

WOOSTER

684.81

284.77



804.50
804.18

.32

② 7.72A
0.49A

8.21A
8.11A

084 1.00A
047 3.48A

4.48A
① 1.14A

3.34A
② 2.85A

0.49A

Al. Cor. 71A 0.69A
2.85A

3.54A

846.84
846.81

846.81
846.62

③ -084
-033
7.72 A.
8.21 A.

8.11 A

① 290
-082
-034
1.00 A.

1.14 A

② -047-083
3.48A 2.85A

20795
SEE 7-00-028-B

#20795
07-00-028-102-017 71A 0.69 Ac. CORR. PER SURVEY

② 2.8454A ROUNDED 2.85A
0.6868A

3.5322A

748.00
0.69A

3.54A

P.P. NO. 07-00-028-102 07-00-029-000-
PRIOR INST: DV.905/874 1314/340 266/174
DV.684/574
CLOSURE: 1.14 ac C=1:INF. 3.53 ac C=1:604,667
SURVEYED BY: KS ASSOC,

APPROVED
LORAIN CO.
MAP DEPT.

DATE 4-11-94

PAGE 7-00-029.D

CAROLYN
BY FRANCIS

① VDU # 20795