

0.494
 003 3.87A
 0.14A

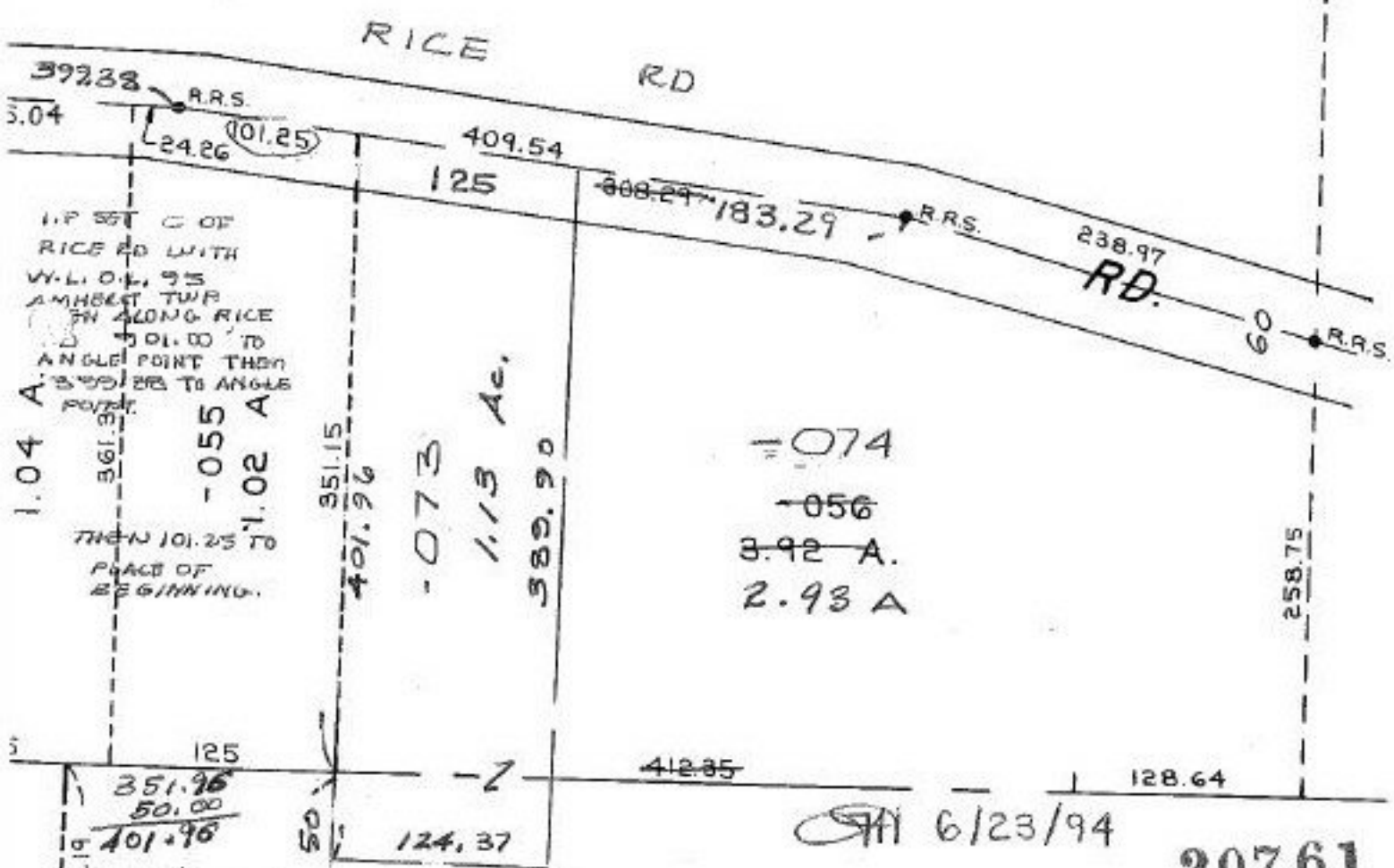
 3.73A

0.495
 056 3.92A
 0.98A

 2.93A

05-00-095-000-

0.495



SM 6/23/94

20761

P.P.NO. 05-00-095-000- 05-00-094-101-
 PRIOR INST: O.R. 808/1
 closure; 1.13 ac. C=1:107,065
 SURVEYED BY: CHARLES P. WARYU
 REG. SURVEYOR Jan. '94

APPROVED
 LORAIN CO.
 MAP DEPT.
 DATE 3-15-94
 PAGE 5-00-095 A
 BY CAROLYN
 FRANCIS
 WORD # 20761