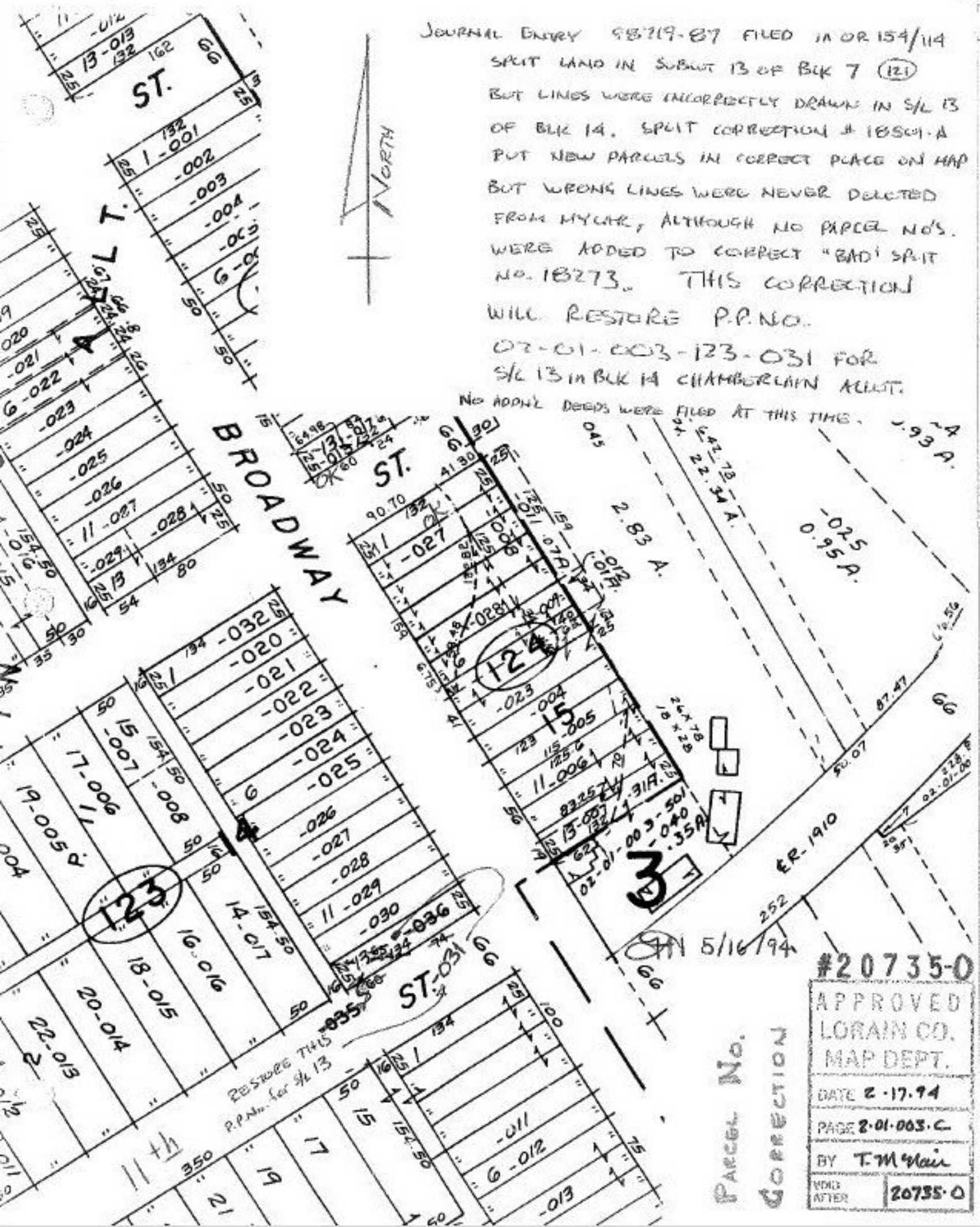


JOURNAL ENTRY 98719-87 FILED IN OR 154/114
 SPLIT LAND IN SUBLOT 13 OF BLK 7 (121)
 BUT LINES WERE INCORRECTLY DRAWN IN S/L 13
 OF BLK 14. SPLIT CORRECTION # 18504-A
 PUT NEW PARCELS IN CORRECT PLACE ON MAP
 BUT WRONG LINES WERE NEVER DELETED
 FROM MYLAR, ALTHOUGH NO PARCEL NOS.
 WERE ADDED TO CORRECT "BAD" SPLIT
 NO. 18273. THIS CORRECTION
 WILL RESTORE P.P. NO.
 02-01-003-123-031 FOR
 S/L 13 IN BLK 14 CHAMBERLAIN ACCT.



NO ADDNL DEEDS WERE FILED AT THIS TIME.

#20735-0

APPROVED	
LORAIN CO.	
MAP DEPT.	
DATE 2-17-94	
PAGE 2-01-003-C	
BY T.M. Main	
VOID AFTER	20735-0

Parcel No.
CORRECTION

RESTORE THIS P.P. No. for S/L 13

MAY 5/16/94