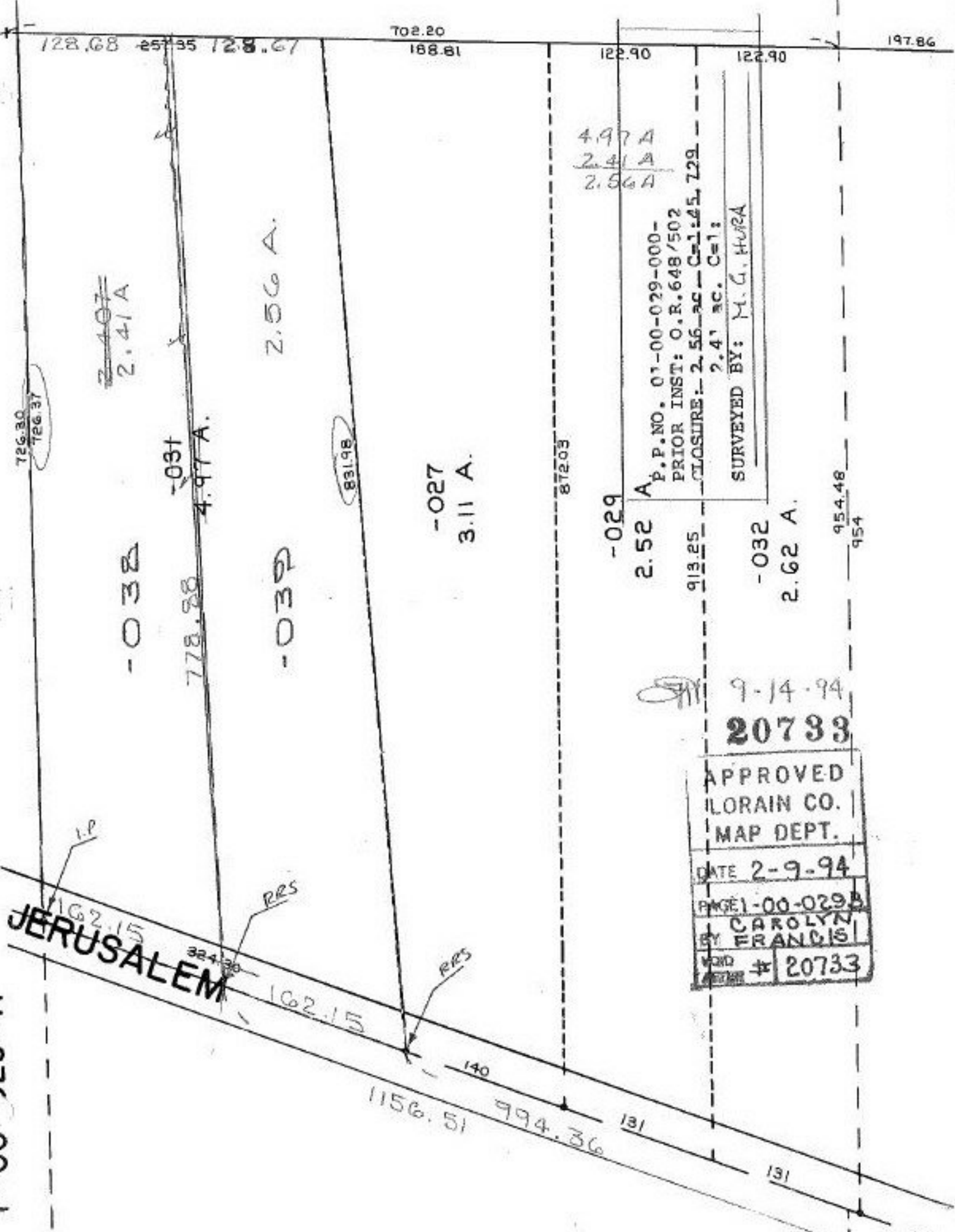


1-00 029-A



726.30
726.37

~~2.407~~
2.41 A

-032

-031

778.28

4.97 A.

-030

2.56 A.

831.98

-027
3.11 A.

872.03

-029

2.52 A

4.97 A
2.41 A
2.56 A

P.P. NO. 01-00-029-000-
PRIOR INST: O.R. 648/502
CLOSURE: 2.56 AC - C-1-45, 729
2.41 AC. C=1:
SURVEYED BY: M.G. HURA

913.25

-032

2.62 A.

954.48

954

9-14-94
20733

APPROVED
LORAIN CO.
MAP DEPT.

DATE 2-9-94

PAGE 1-00-029

BY CAROLYN
FRANCIS

WORD # 20733

JERUSALEM

1156.51

994.36

131

131

128.68 257.35 128.67

702.20
168.81

122.90

122.90

197.86