



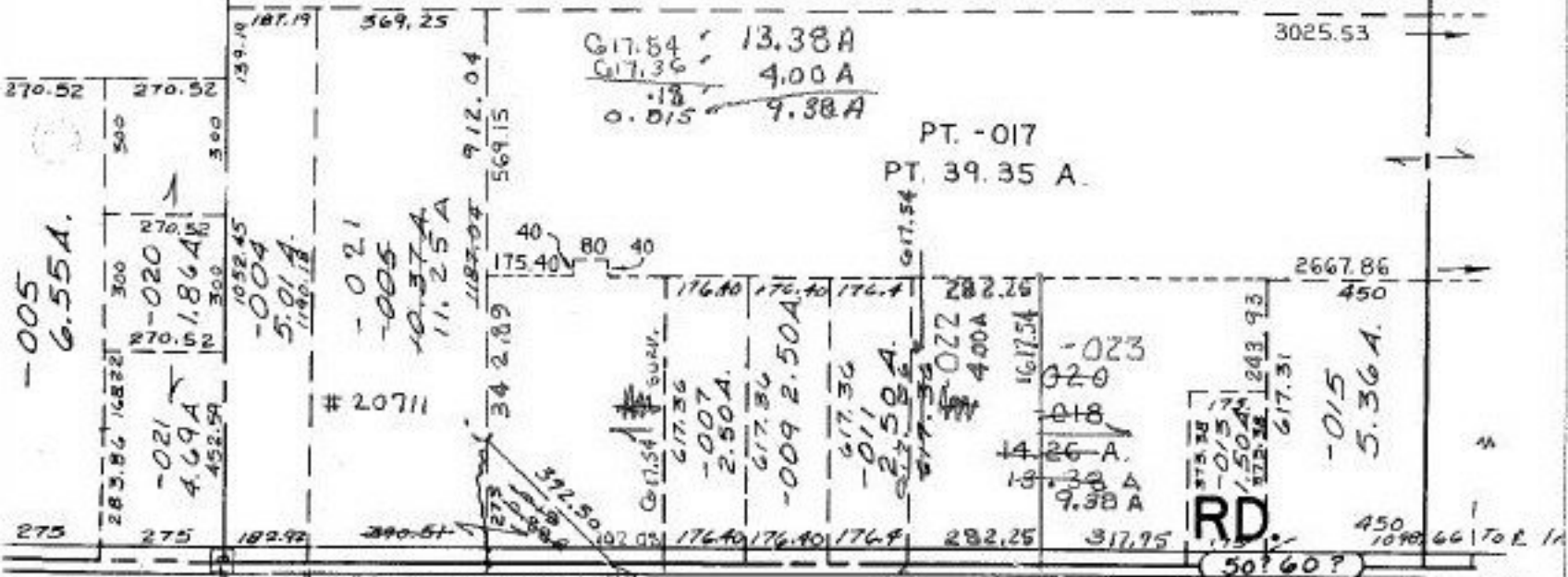
- 001
54.00 A.

- 002
27.75 A.

94

617.54 13.38 A
617.36 4.00 A
- .18
0.015 9.38 A

PT. - 017
PT. 39.35 A.



WEBSTER RD.

AUG 2 1994

20725

P.P.NO. 15-00-094-000-
PRIOR INST: DV.1114/723
CLOSURE: C=1:inf.
SURVEYED BY: LAUNDON, SIMON,
CAHL & ASSOC.

APPROVED
LORAIN CO.
MAP DEPT.
DATE 2-17-94
PAGE 15-G
BY CAROLYN
FRANCIS
20725