

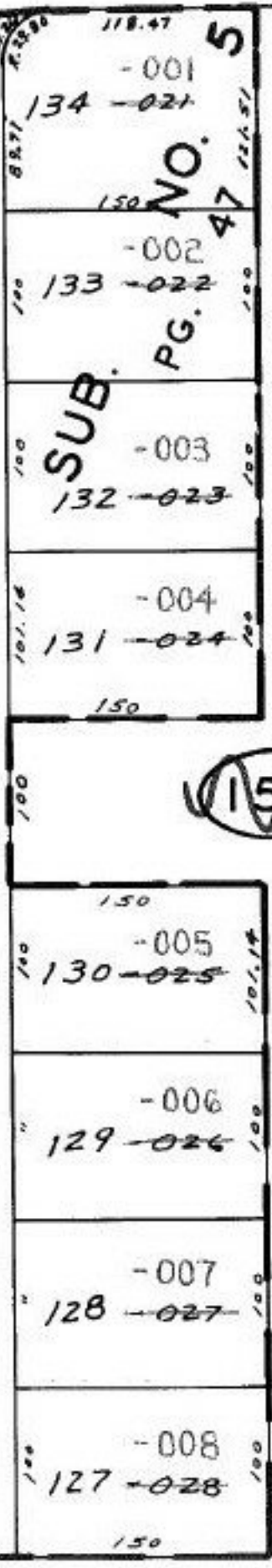
BLVD.

235.10

280.54

0

MOOREWOOD
 2.24 ACRES
 900
 1.27 A.
 1.38.47
 100
 100
 12
 3
 14
 5
 VOL.
 016
 18
 017
 2
 52.36
 60



PARCELS BEING RE-NUMBERED IN
 DIFFERENT BLOCKS, DUE TO NEW
 SUBDIVISIONS BEING PLATTED.

- 009
~~019~~
 11.62 A.

~~150~~

152

CHANGE

6/22/94
 PARCEL NO. CORRECTION
 #20720-0

APPROVED	
LORAIN CO.	
MAP DEPT.	
DATE 1/31/94	
PAGE 4-00-007-H	
BY T. HOLLIS	
VOID AFTER	20720-0

303.78

302.79

150

150