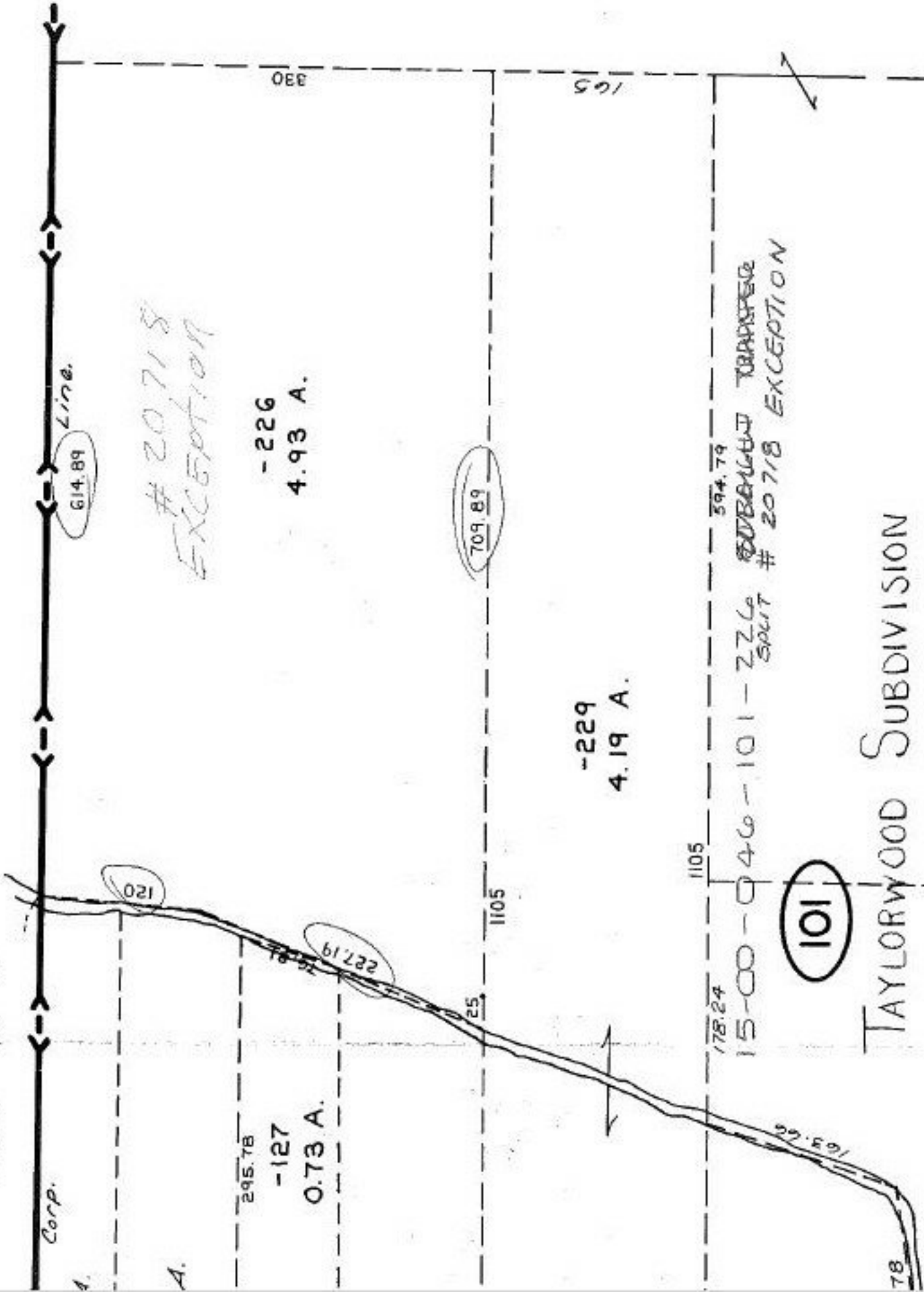


SEE 15-C



# 20718  
EXCEPTION

-226  
4.93 A.

-229  
4.19 A.

15-00 - 46 - 101 - Z.Z.C. SUBDIVISION TO BE SPLIT # 20718 EXCEPTION

TAYLORWOOD SUBDIVISION

VOL. 48 Pgs. 67 & 68 of -125