

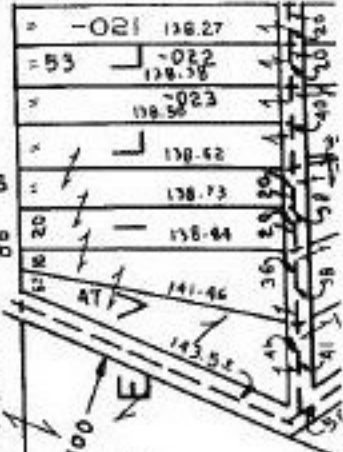
4/20/94

117

213.40
02

MEX
197.70

Pt. 07



805

-029
2.99 A.

623.85
587.85

622.46

1.15 Ac.

-055

456.00 = 030

-2-27 A.

1.11 Ac.

-054

409.20 (407.99)

209.16

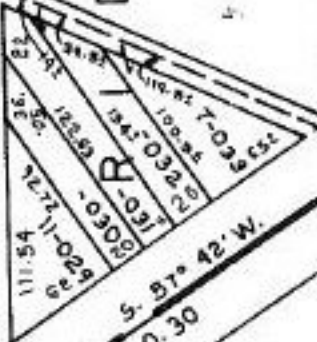
-032
0.69 A.

164.27

115.53

LEAR NAGLE

D G NE



PER SURVEY - DANE A.
HAPONOK # 6211

CL. @ 1.11A. 11582, 136
@ 1.15A. 11679, 587

PRIOR INST. REF. -
DV 1370/811

230-135.03
274.70 210.30

180

232.71
228.90

95.19

LEAR NAGLE
575.60

-001
1.87 A.

5/26/94

#20707

APPROVED
LORAIN CO.
MAP DEPT.

DATE 1-26-94

PAGE 700008-C

BY T. McMan

VOID AFTER 20707

259.46