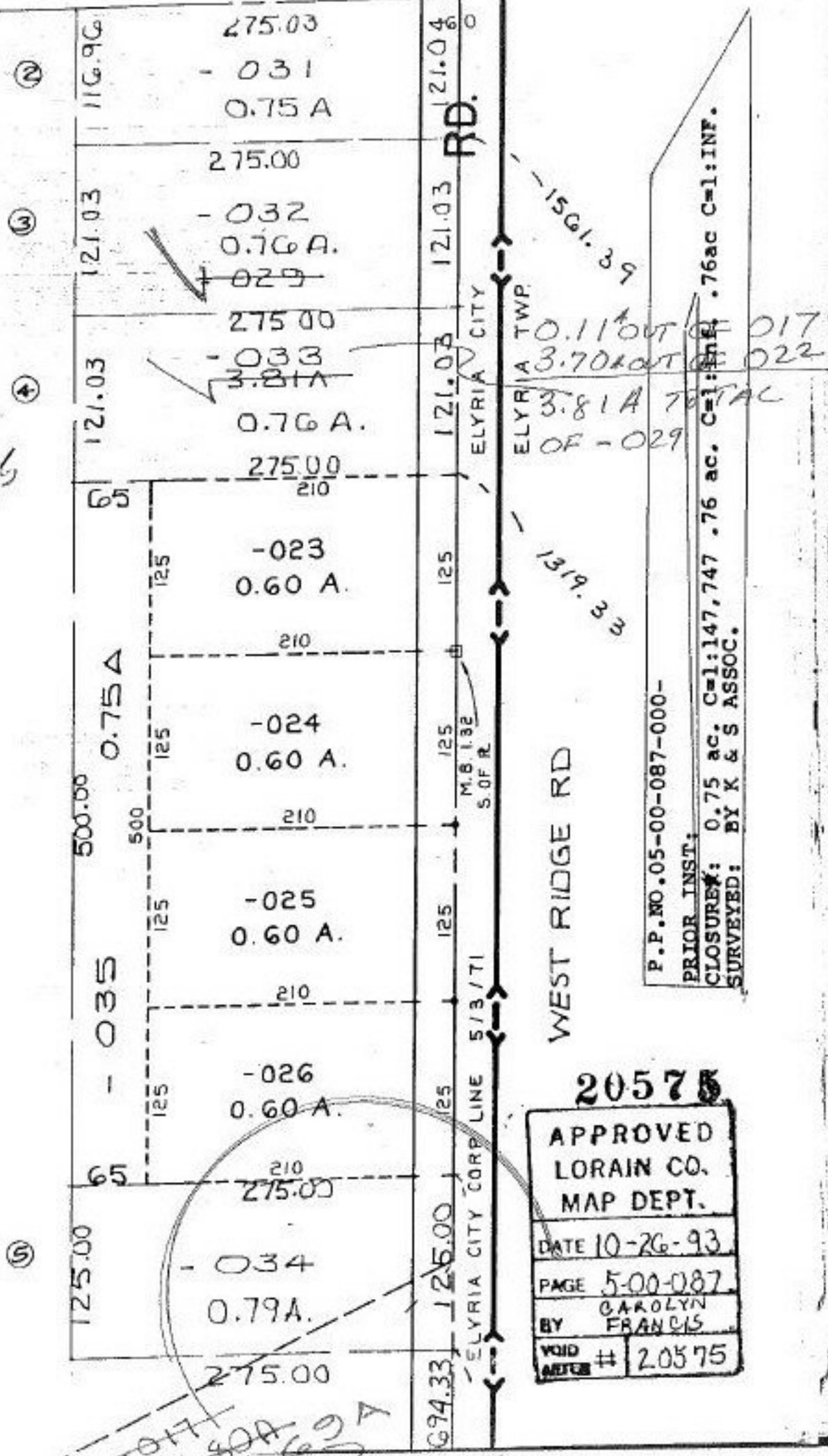


20575

W O
W >

030
3073A

of 2



P.P. NO. 05-00-087-000-
 PRIOR INST:
 CLOSURE: 0.75 ac. C=1:147,747 .76 ac. C=1:INF.
 SURVEYED: BY K & S ASSOC.

20575
 APPROVED
 LORAIN CO.
 MAP DEPT.
 DATE 10-26-93
 PAGE 5-00-087
 BY CAROLYN FRANCIS
 VOID AFTER # 20575

OFF 21.80A 21.62A
 SEE # 20706-C For COLL.