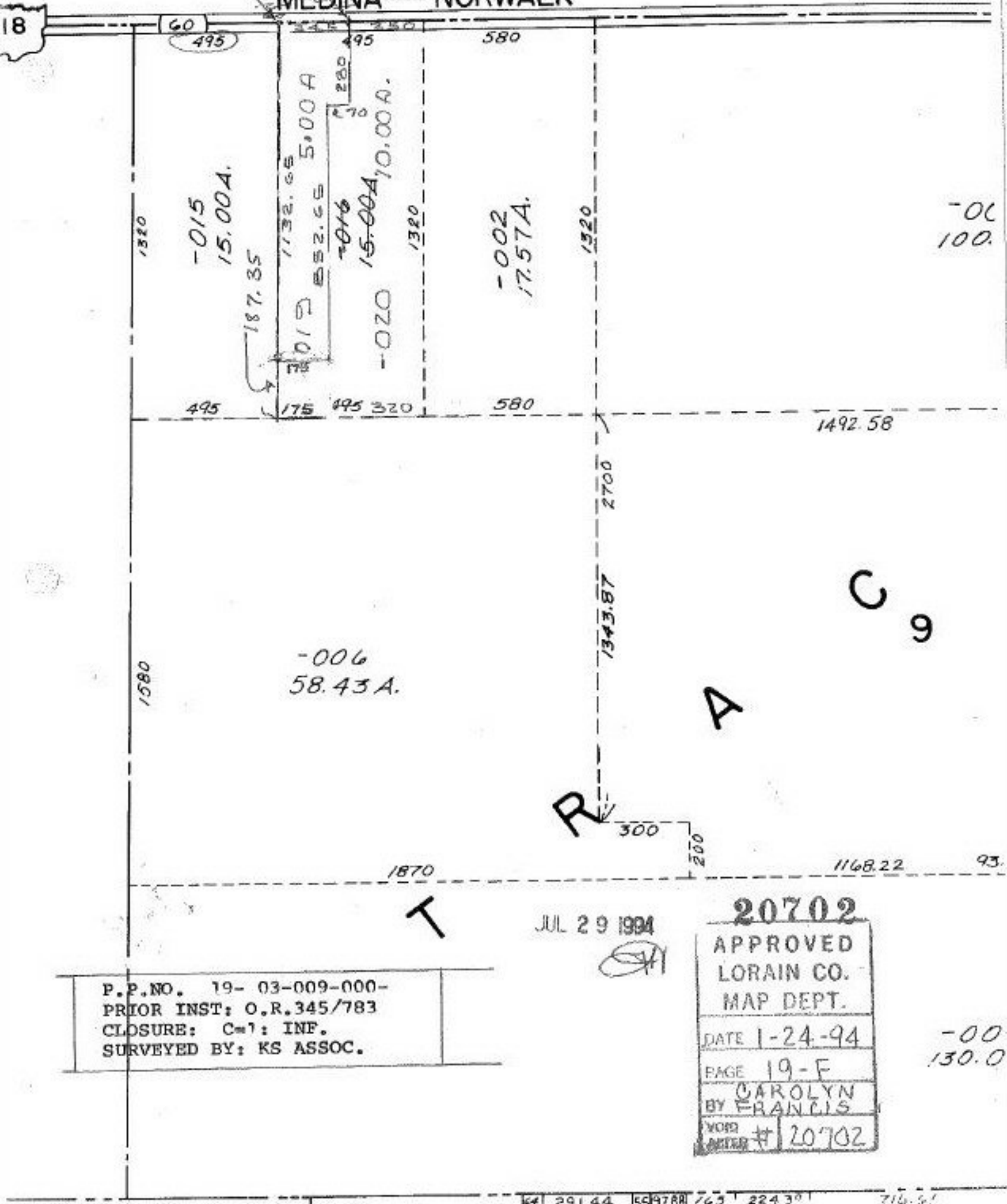


MEDINA — NORWALK



-015
15.00A.

-016
15.00A

-020
10.00A.

-002
17.57A.

-006
58.43A.

-00
100.

-00
130.0

P.P.NO. 19- 03-009-000-
PRIOR INST: O.R.345/783
CLOSURE: C=1: INF.
SURVEYED BY: KS ASSOC.

JUL 29 1994
(Signature)

20702
APPROVED
LORAIN CO.
MAP DEPT.
DATE 1-24-94
PAGE 19-F
BY CAROLYN
FRANCIS
VOID AFTER # 20702