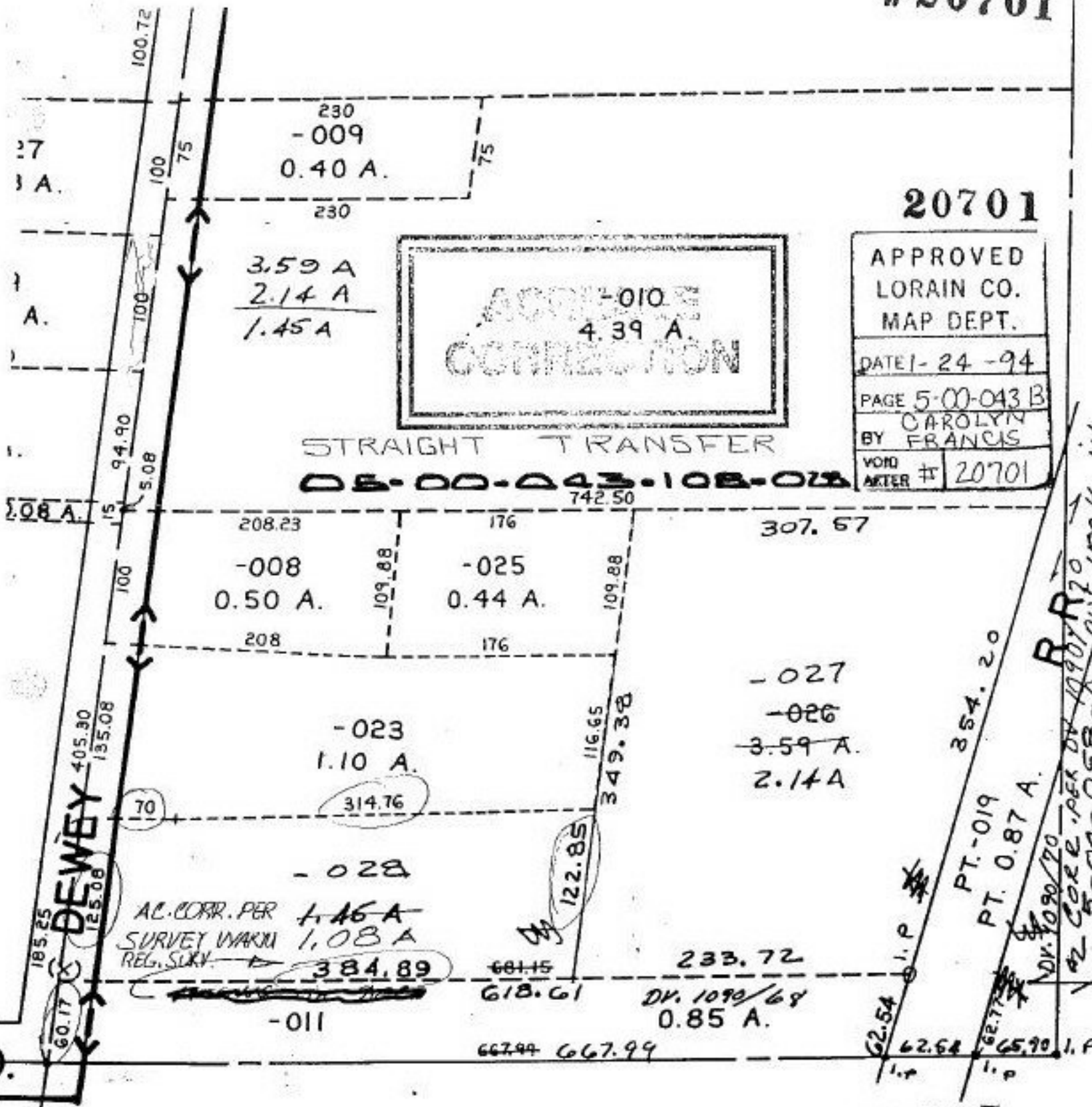


#20701



20701

APPROVED
LORAIN CO.
MAP DEPT.
DATE 1-24-94
PAGE 5-00-043 B
BY CAROLYN
FRANCIS
VOID AFTER # 20701

STRAIGHT TRANSFER

05-00-043-108-028

AC. CORR. PER SURVEY WARYU REG. SURV.
1.46 A
1.08 A
384.89

DV. 1090/68
0.85 A.

~~20657~~

P.P. NO. 05-00-043-108-
PRIOR INST: DV. 1292/679
CLOSURE: ~~20657~~
SURVEYED BY: CHARLES WARYU
REG. SURVEYOR
#20701
AC. CORR. CLOSURE: C=1; 167, 206

~~APPROVED~~
~~LORAIN CO.~~
~~MAP DEPT.~~
DATE 12-21-98
PAGE 5-00-043 B
BY FRANCIS
VOID AFTER # 20657