



7.84A  
0.86A  
6.98A

JAMESDALE DR  
200.87 V.24 P.7  
Vac. V. 957 P. 990

-030  
9.52 A.

-005  
7.84 A.  
6.98A

359.19  
9.15  
.04

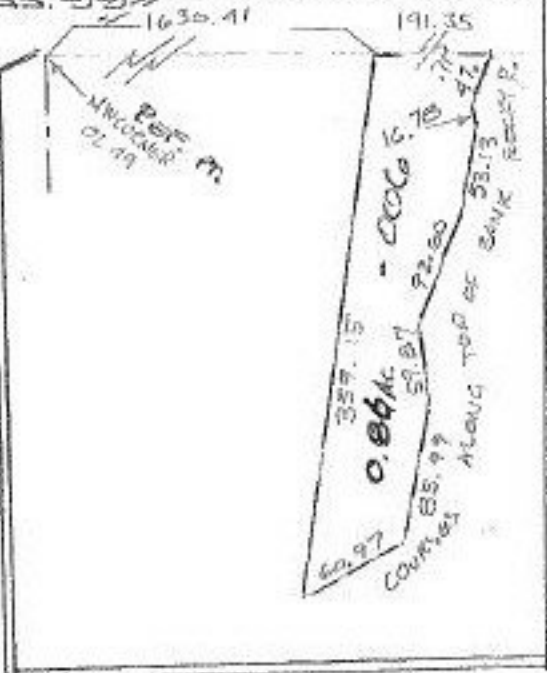
-002  
93.00A  
**49**

-003  
36.60A.

P.P.NO. 12-00-049-000-  
PRIOR INST: A870/131  
CLOSURE: C=1:247,496  
SURVEYED BY: KS ASSOC.

-004  
MEMBER STRAUB,  
PS 7055 23.40A.

DETAIL-N.T.S.



AUG 5 1994  
**20686**

APPROVED  
LORAIN CO.  
MAP DEPT.  
DATE 1-12-94  
PAGE 12-G  
BY CAROLYN  
FRANCIS  
VOID AFTER # 20686

2970 -1  
PL 5.32A  
PT. 491A  
SFF