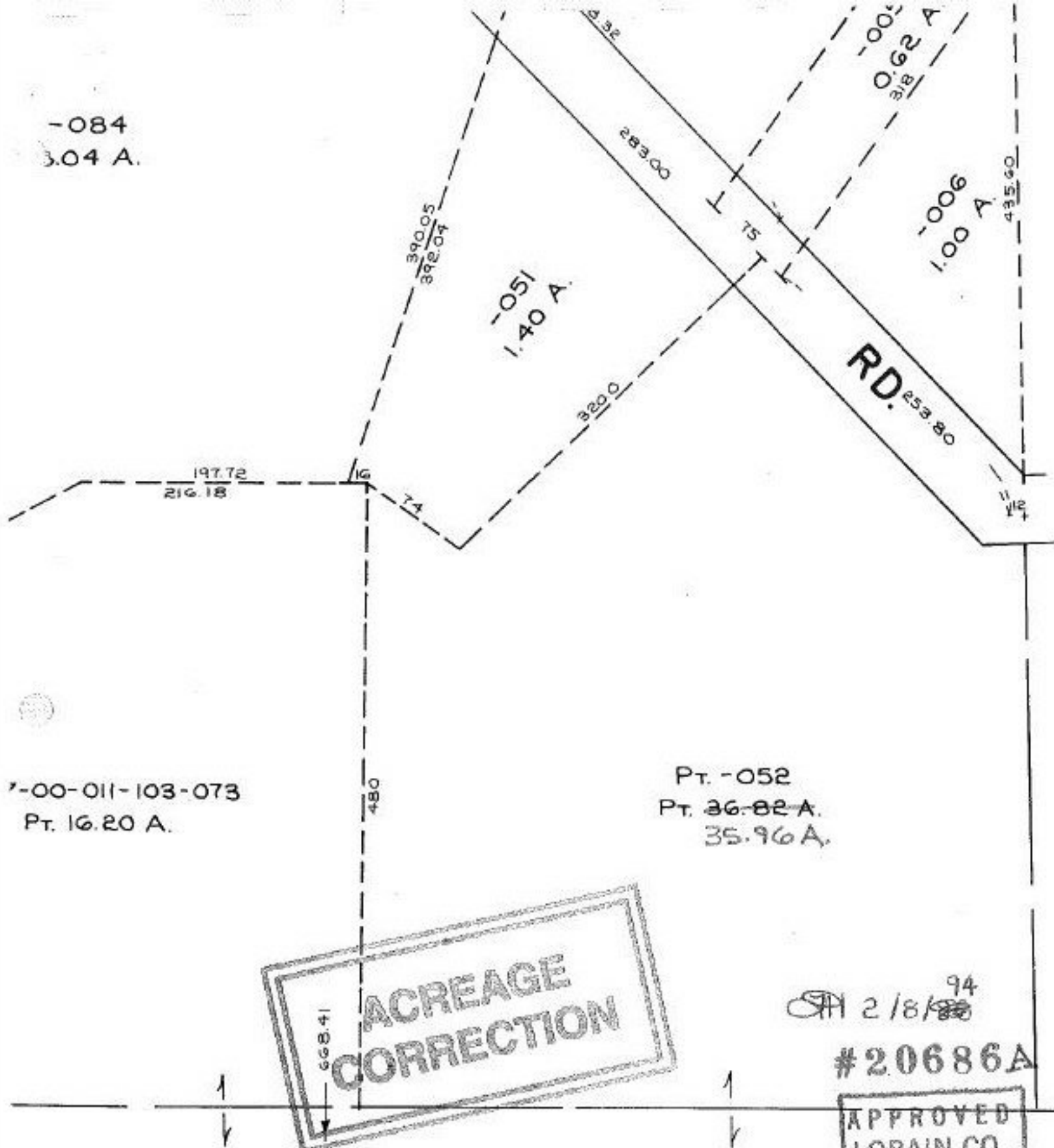


-084
3.04 A.



7-00-011-103-073
Pt. 16.20 A.

Pt. -052
Pt. 36.82 A.
35.96 A.

668.41
**ACREAGE
CORRECTION**

2/18/94
 #20686A

APPROVED	
LORAIN CO.	
MAP DEPT.	
DATE 12-28-93	
PAGE 7-00-011-A	
BY <i>J. Elliott</i>	
VOID AFTER	20686A

MAP (1) OF (8)