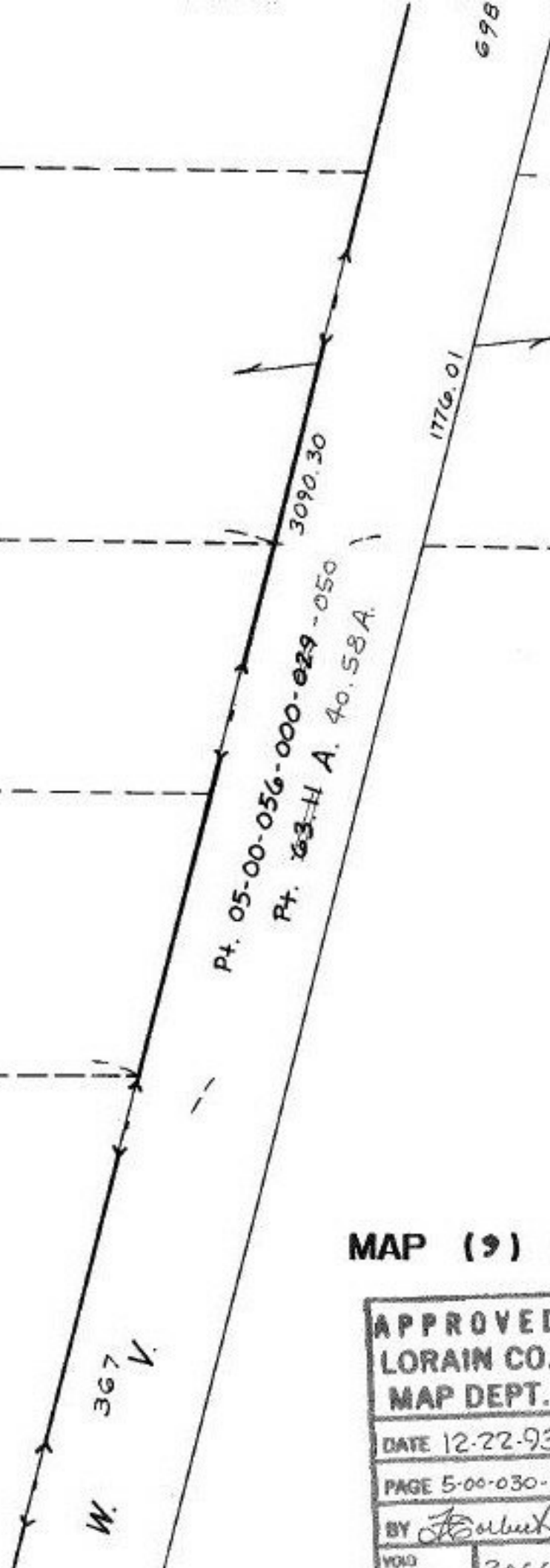


Pt. -029
Pt. 13.39A.

Pt. -030
Pt. 7.00 A.

Pt. -031
Pt. 7.96

-036
7.08A.



MAP (9) OF (10)

APPROVED LORAIN CO. MAP DEPT.	
DATE 12-22-93	
PAGE 5-00-030-B	
BY <i>Forbuck</i>	
VOID AFTER	20665

#20665
SN 6/23/94