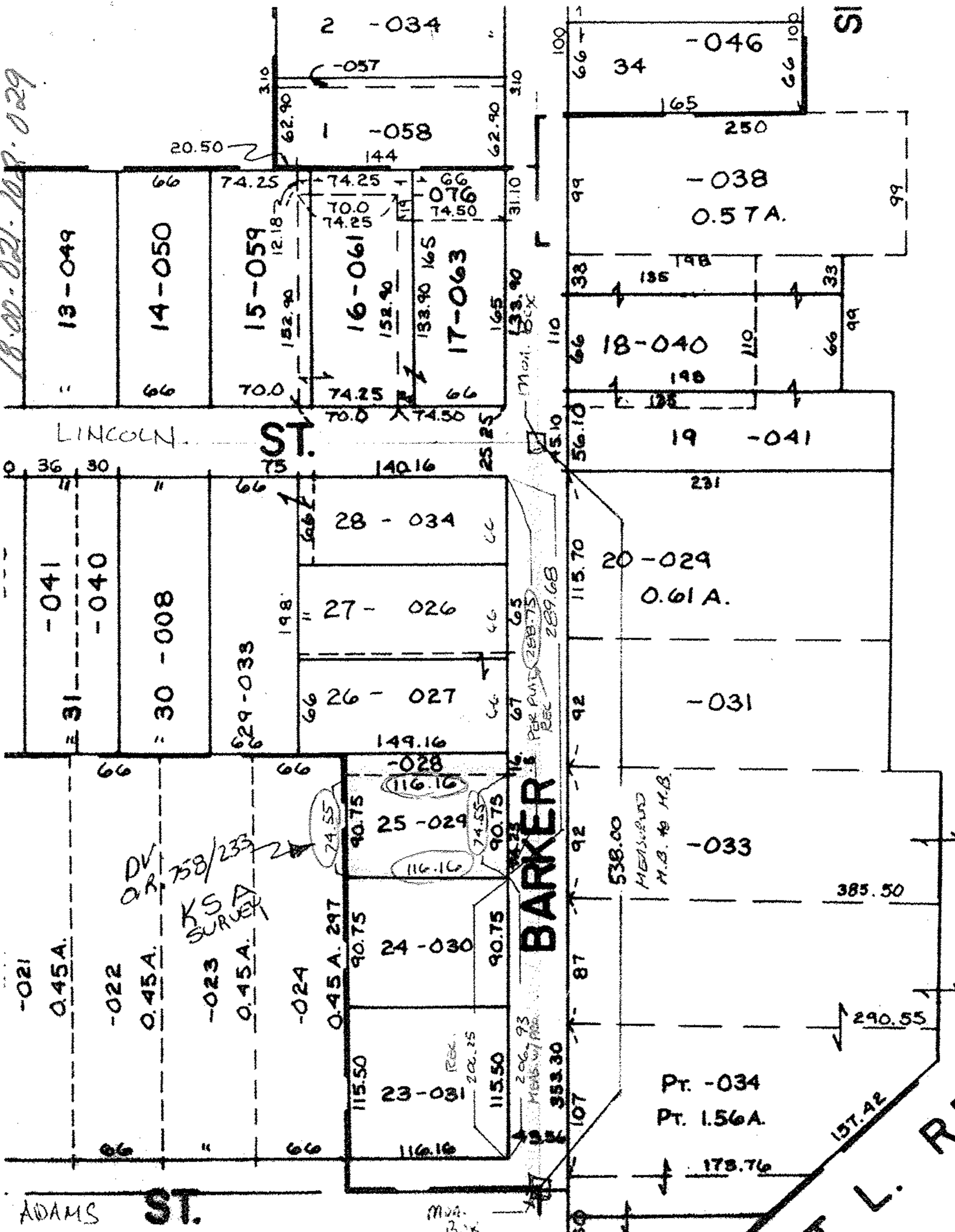


18-00-021-102-029



O.R. 758 / 233
18-00-021-102-029

RECORD FROM NE CORNER S/L 28 TO SE CORNER S/L 23 = 495

REPORTED AS FOUND BY K.S. ASSOC. 9/90 SURVEY = 496.61

NOTE - ADAMS ST. & LINCOLN ST R/W WIDTH WAS PREPARED ALONG WITH SUBLT DIMEN.

#20664-A

APPROVED
LORAIN CO.
MAP DEPT.
DATE 8-11-94
PAGE 18-00-021-A
BY T. McHair
20664-A

BARKER

C.C.C. & ST. L. R.R.