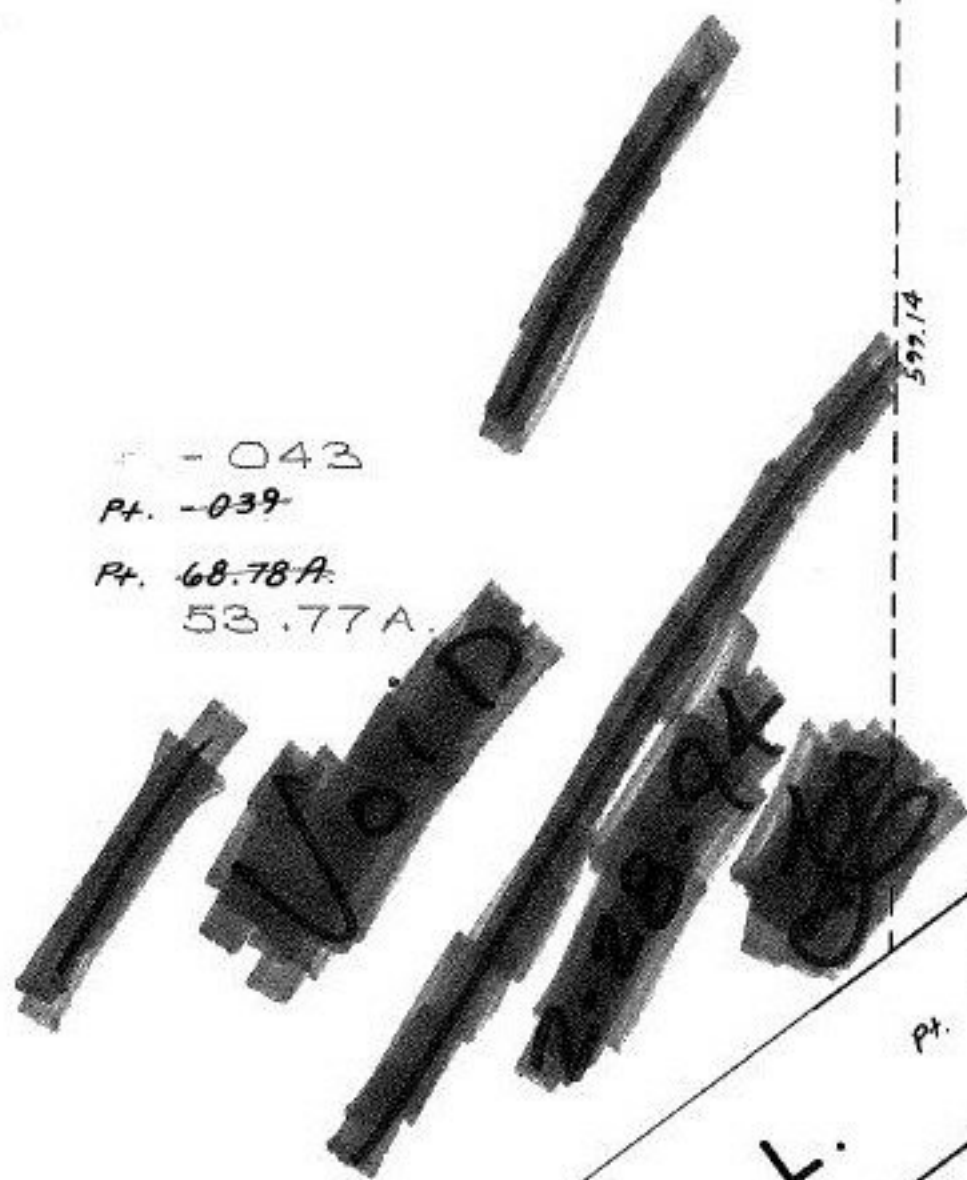


SEE 11-00-058-A

438.04 661.49

- 043
Pt. -039
Pt. 68.78A
53.77A



597.14



Pt. 11-C
P

ST. L.

AUG 5 1934

P.P.NO. 11-00-058-000-
PRIOR INST: O.R.647/193

20649	
APPROVED LORAIN CO. MAP DEPT.	
DATE 1-12-94	
PAGE 11 00 058 B	
BY CAROLYN FRANCIS	
VOID AFTER #	20649

C. C. B