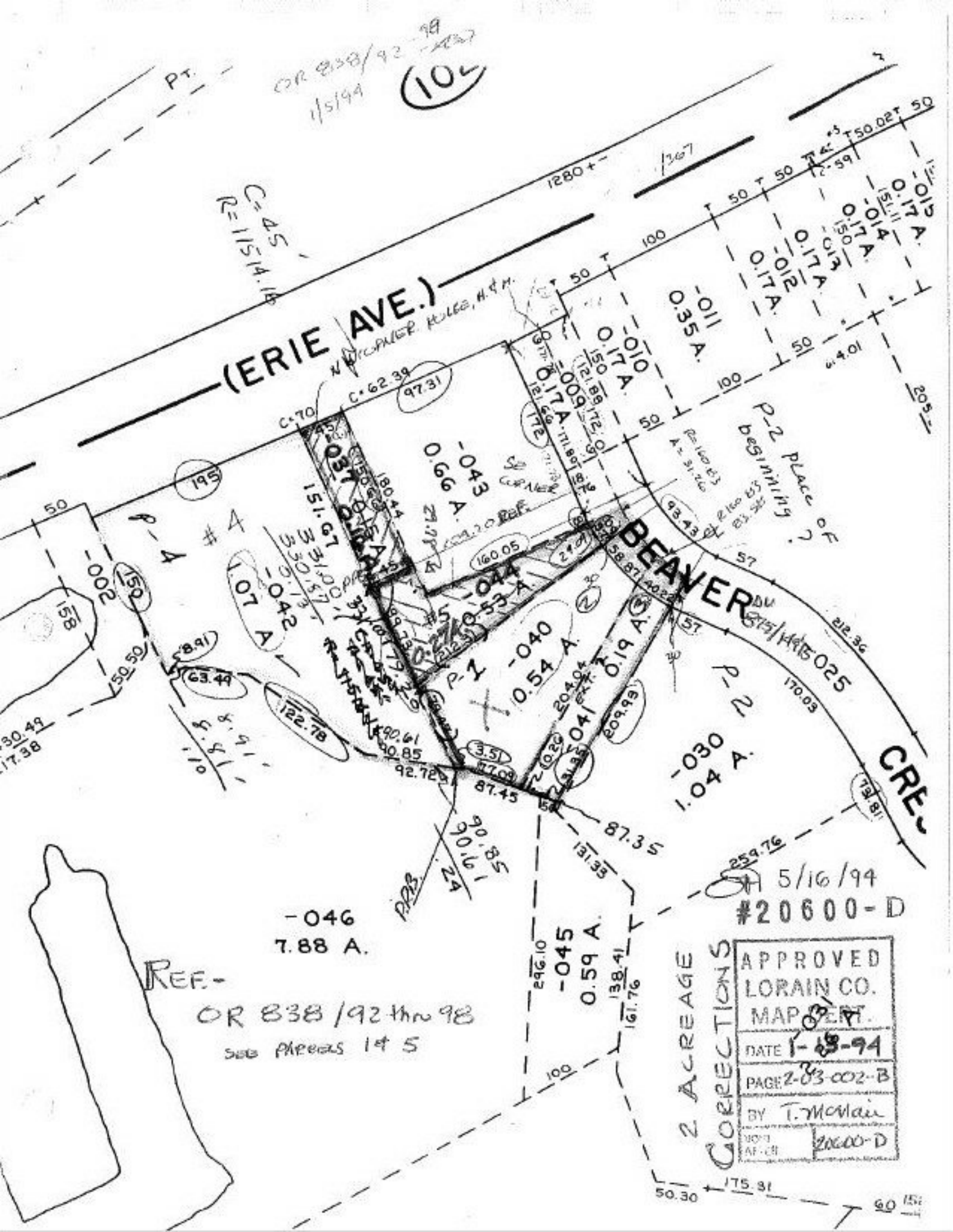


OR 838/92-98  
1/5/94  
(104)

C-45  
RE 11514.18

(ERIE AVE.)

N.W. CORNER RULES, H. & M.



REF -  
OR 838/92 thru 98  
see Areas 1 & 5

-046  
7.88 A.

2 ACREAGE  
CORRECTIONS

APPROVED
LORAIN CO.
MAP DEPT.
DATE 1-18-94
PAGE 2-03-002-B
BY T. McVain
NO. 20600-D

5/16/94  
#20600-D

50.30 175.31 60 152