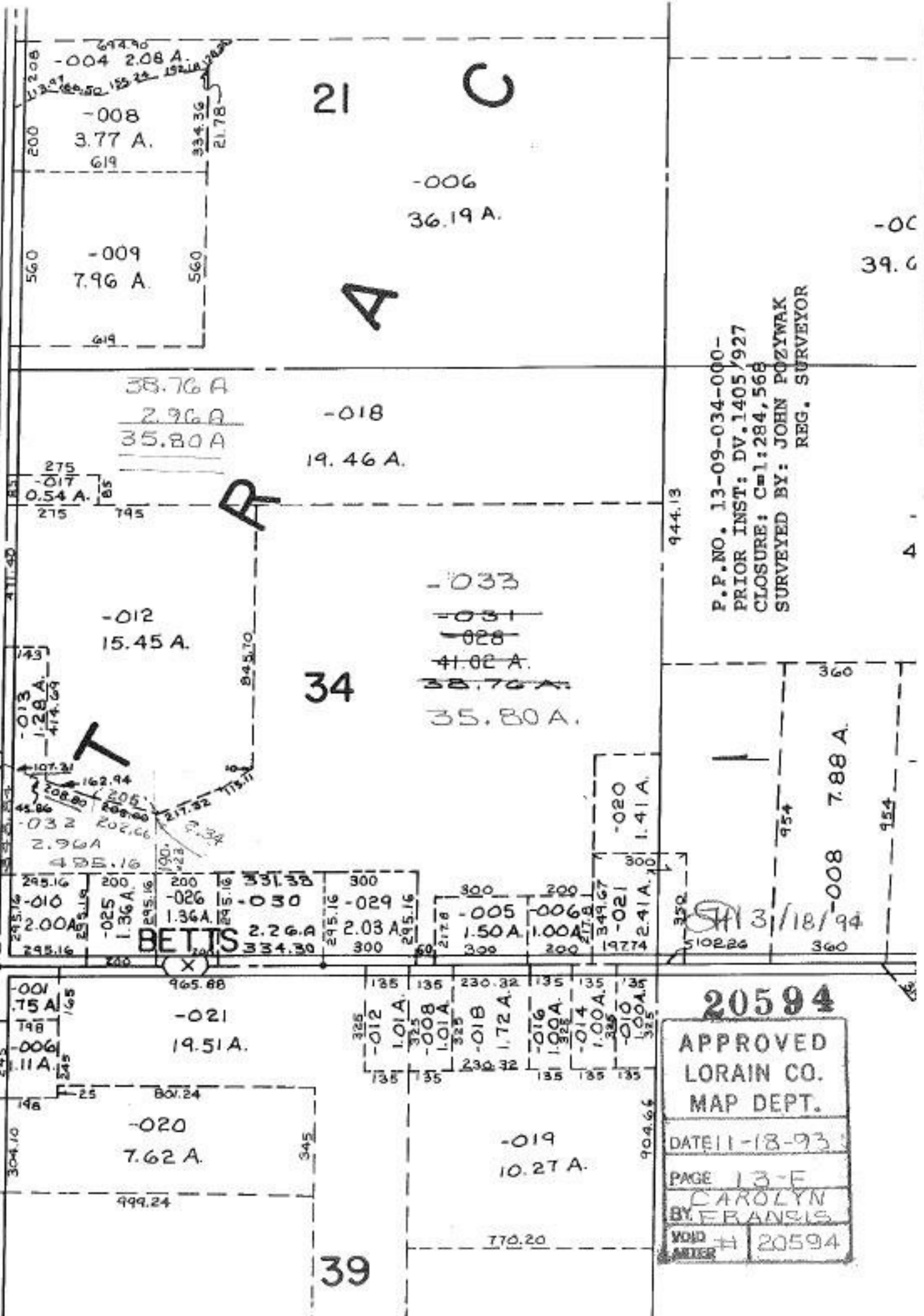


BAIRD RD.

SEE 13-E



P.P. NO. 13-09-034-000 -
 PRIOR INST: DV. 1405/927
 CLOSURE: C=1:284,568
 SURVEYED BY: JOHN POZYWAK
 REG. SURVEYOR

3/18/94
 510226

20594
 APPROVED
 LORAIN CO.
 MAP DEPT.
 DATE 11-18-93
 PAGE 13-E
 BY CAROLYN
 FRANCIS
 VOID AFTER # 20594