

(10) R=236.15
 TAN 80.18
 ARC 154.60
 CH 151.84

346.02'
 85.37'
 260.65'

PLAT 67
 V 48/68

20' STORM SEWER EASMT.
 20' STORM SEWER EASEMENT

4' DITCH
 N. 71° 55' 40" E. 578.45'
 915.45'

5.89° 25' 10" W. 40.00'
 40.00'

N. 66° 42' 10" E. 452.22'

36 1.61' 5.86° 42' 10" W. 357.40' E

APPROVED
 LORAIN CO.
 MAP DEPT. V. 1296 P. 721

APPROVED
 LORAIN CO.
 MAP DEPT. V. 1296 P. 721

DATE 10-28-93

PAGE 15-00-046A

BY GARY LYN

FRANCIS

WINNER'S

WINNER'S CERTIFICATE

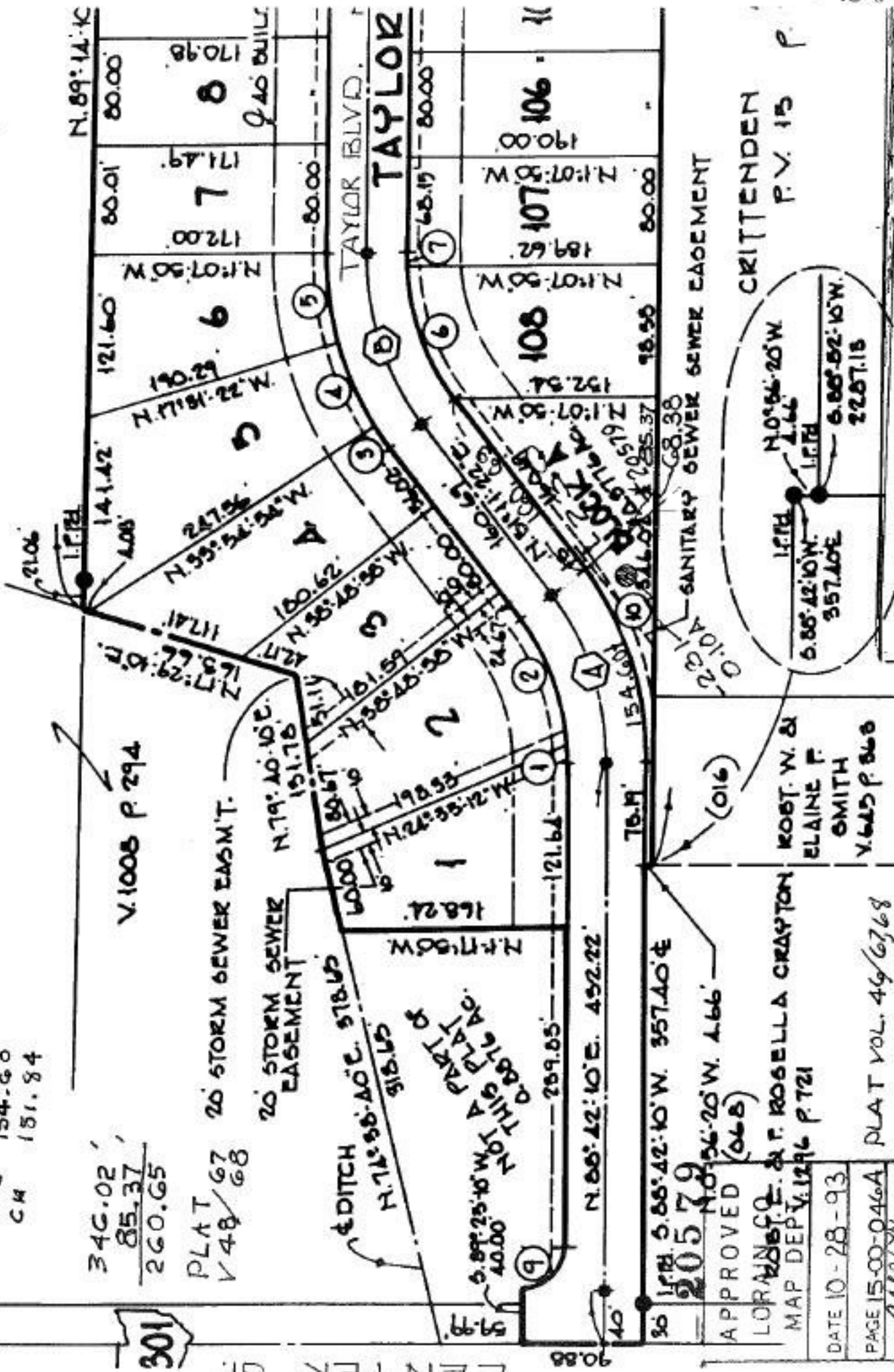
PLAT VOL. 49/6768

PLAT VOL. 49/6768

ROBT. W. &
 ELAINE F.
 SMITH
 V. 645 P. 868

CHURCH OF GOD & LAGRANGE INC. V. 1107 P. 458

V. 1005 P. 294



P.P. NO. 15-00-046-101-
 PRIOR INST: O.R. 513/606 PLAT V 48/67, 68
 C=1:53,779 SURVEYED. LAUNDON, SIMON, CAHL. & AS