

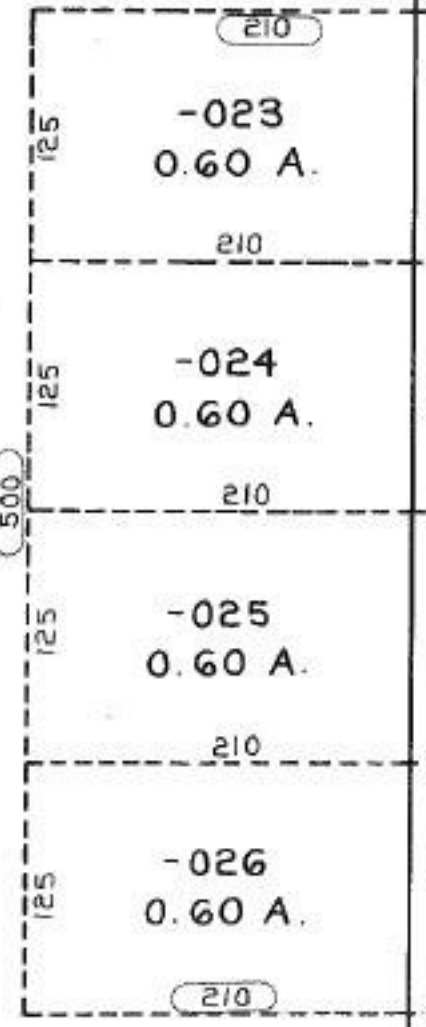
34.54 A  
 3.81 A  
 30.73 A

275.03  
 ① SA 1/26/94  
**20575**  
 APPROVED  
 LORAIN CO.  
 MAP DEPT.  
 DATE 10-26-93  
 PAGE 5-00-087  
 BY CAROLYN  
 BY FRANCIS  
 VOID  
 NUMBER # 20575

# 20575

984.02

~~-022~~  
~~34.54 A.~~  
 - 030  
 30.73 A.



-029  
 3.81 A

P.P. NO. 05-00-087-000-  
 PRIOR INST: 1368/21  
 CLOSURE C=1:551,620  
 SUREVEYED BY: K & S ASSOC.  
*check 1st 2*

60  
 363.10  
 RD.  
 ELYRIA CITY  
 ELYRIA TWP.  
 M.B. 1.32  
 S. OF R.  
 ELYRIA CITY CORP. LINE 5/3/71  
 125.00  
 275.00