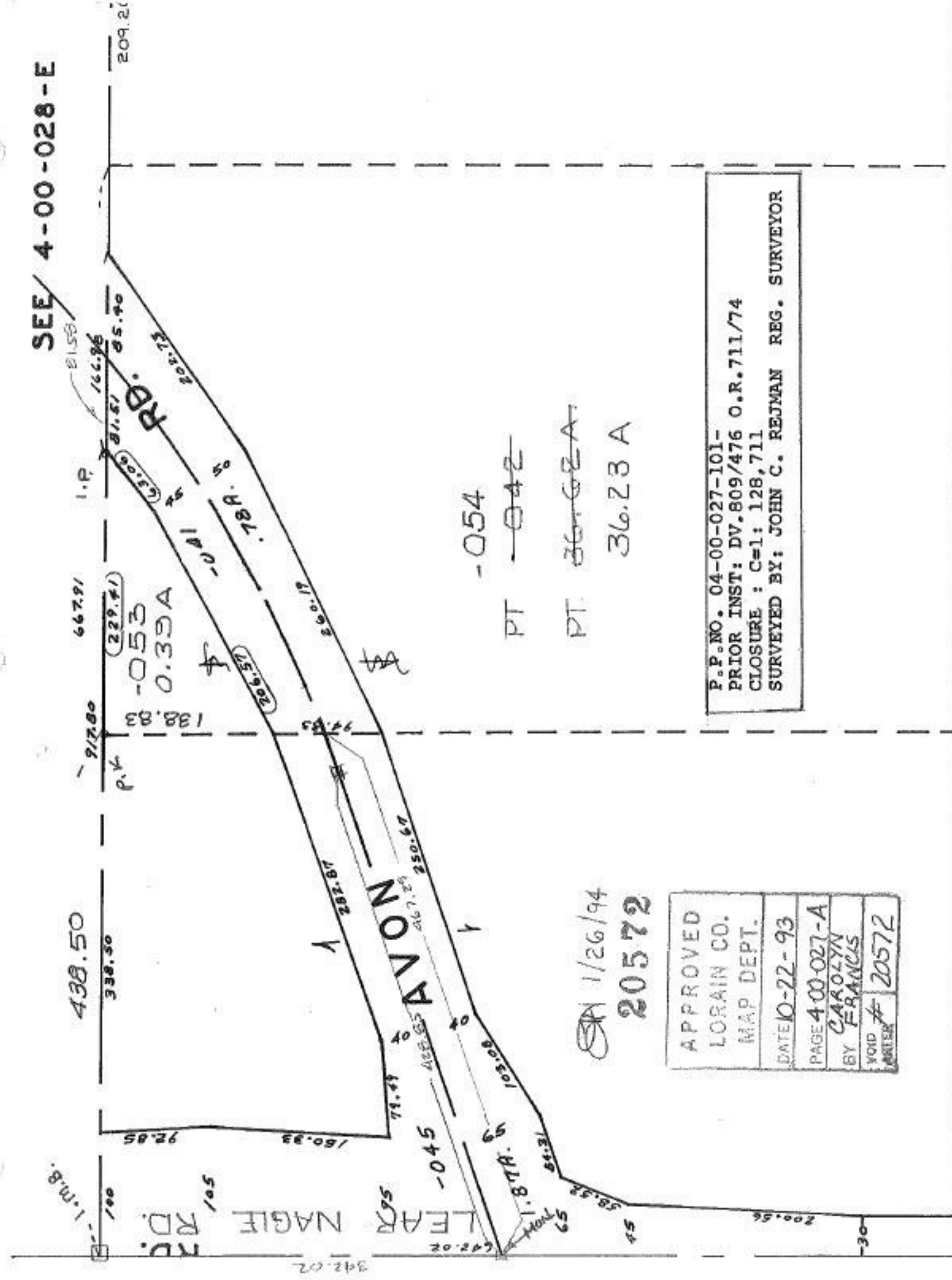


SEE 4-00-028-E



PT -054
 PT ~~36.23~~
 36.23 A

SA 1/26/94
 20572

APPROVED
LORAIN CO.
MAP DEPT.
DATE 10-22-93
PAGE 4-00-027-A
BY CAROLYN FRANCIS
VOID NUMBER # 20572

P.P. NO. 04-00-027-101-
 PRIOR INST: DV.809/476 O.R.711/74
 CLOSURE : C=1: 128,711
 SURVEYED BY: JOHN C. REJMAN REG. SURVEYOR