

101

PT. -050
PT. 17.68 A.

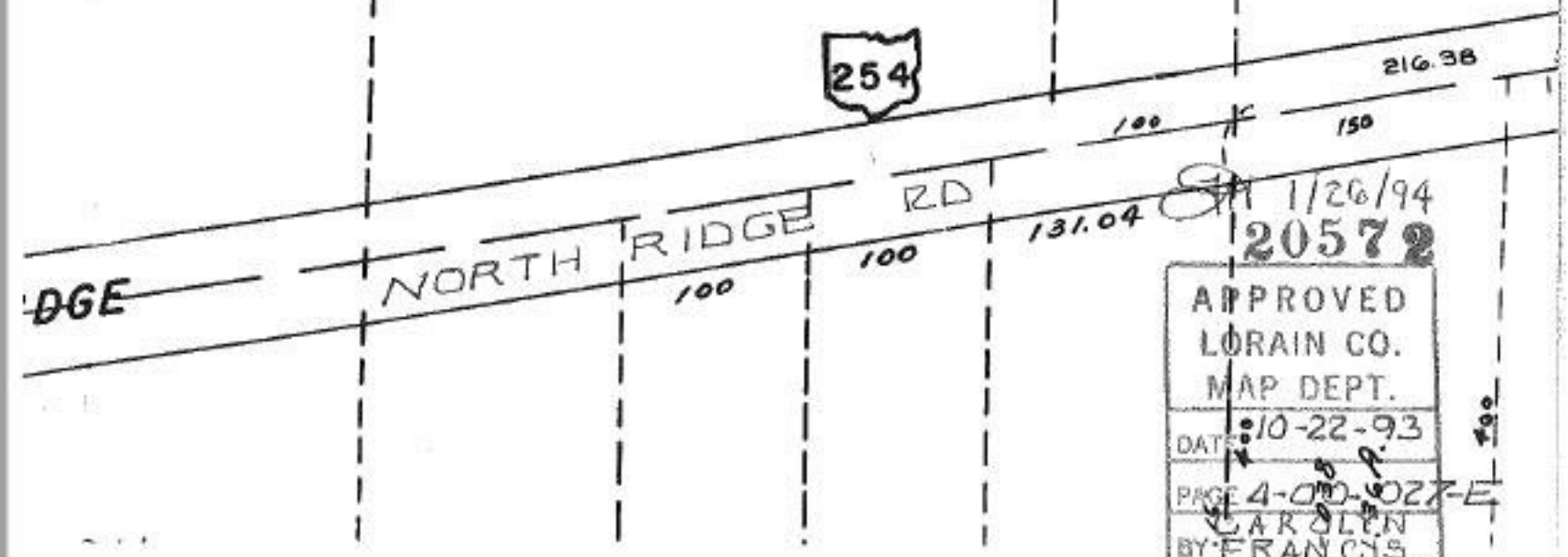
-054
~~042~~
~~36.62 A~~
36.23 A.

X 20572

P.P.NO. 04-00-027-101-
PRIOR INST: DV. 809/476
O.R. 711/74

100
036
46 A.

254



DATE 1/26/94
20572

APPROVED
LORAIN CO.
MAP DEPT.

DATE 10-22-93

PAGE 4-00-027-E

BY CAROLYN FRANCIS

VOID AFTER # 20572