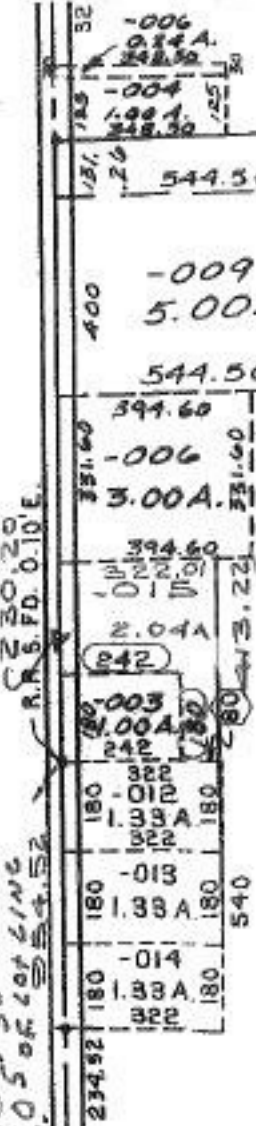


GIFFORD

110.5' SOUTH
110.5' OF LOT LINE
R.R. 30.20
R.R. 3.70 0.10 E.



-001
25.00 A.

7
-002
30.00 A.

-003
25.00 A.

AUSTIN

(60)

310 562.06
-003
4.00 A

310 562.06
-004
4.00 A

310

1387
504
125
132 RPT TO

14-003 in
131.00 A
212.49

43
-011 -016
63.01 A
60.97 A

T

-002
50.00 A.

44

-001
45.00.

13-09-043-000- PRIOR INST: O.R. 701/191
SURVEYED BY: THOMAS M. SNEZEK REG. SURVEYOR
C=1:308,443

3/18/94
20532
-00 68.0

APPROVED
LORAIN CO.
MAP DEPT.
DATE 9-30-93
PAGE 13-H
BY CAROLYN FRANCIS
VOID AFTER # 20532

-001
10.00 A.

1709.80
2057.04

R

544.50
-009
5.00 A.
63.07 A -008
2.04 A 20.02 A.
60.97 A

1500.41

531.53

394.60
-006
3.00 A.

394.60
-015
2.04 A

322
-003
10.00 A.
242

322
-012
1.33 A

322
-013
1.33 A

322
-014
1.33 A

322
-015
1.33 A

322
-016
1.33 A

322
-017
1.33 A

322
-018
1.33 A

322
-019
1.33 A

322
-020
1.33 A

322
-021
1.33 A

322
-022
1.33 A