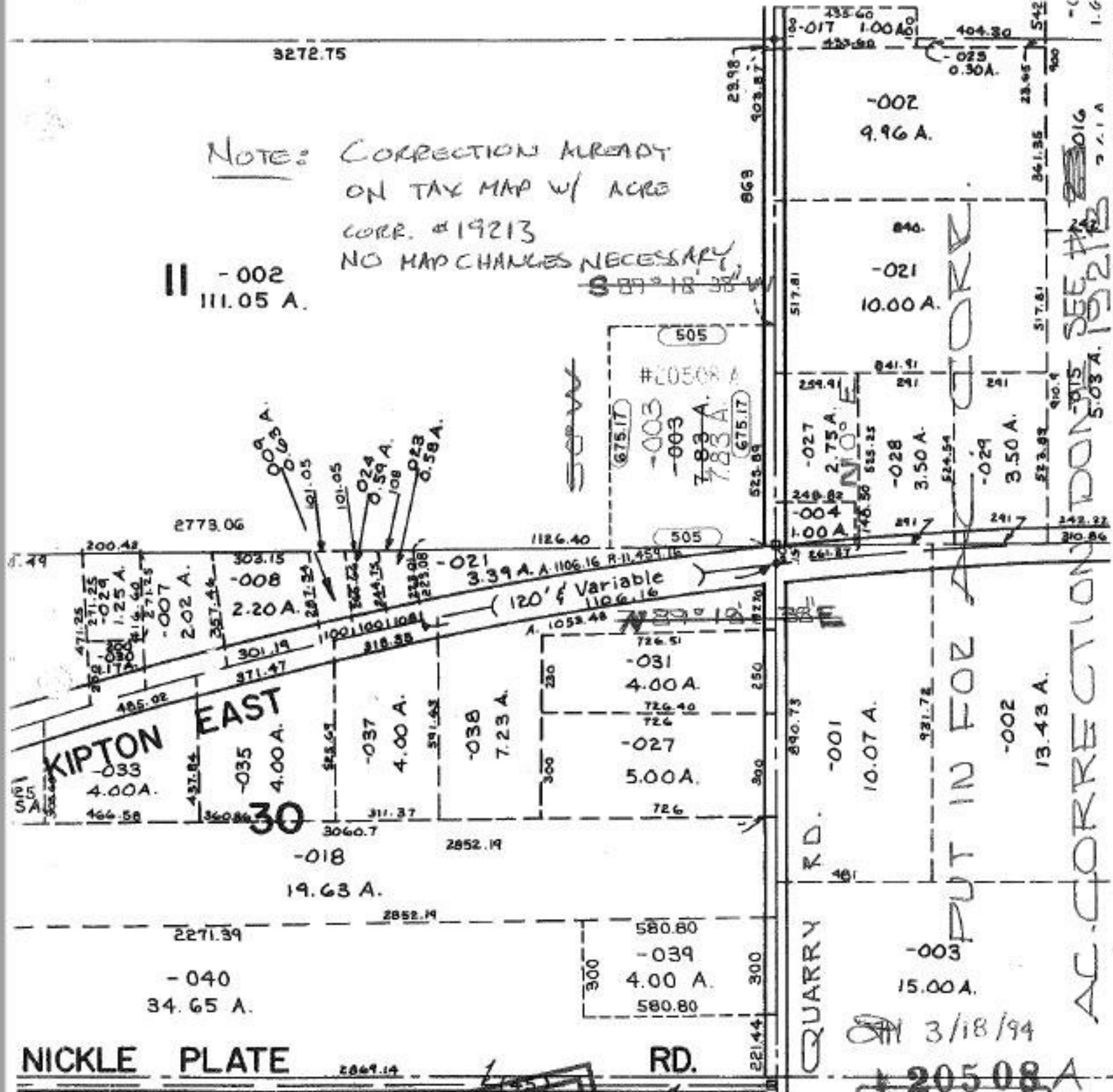


3272.75

NOTE: CORRECTION ALREADY ON TAX MAP W/ ACRE CORR. #19213 NO MAP CHANGES NECESSARY

II -002 111.05 A.



KIPTON EAST

NICKLE PLATE

QUARRY RD.

RD.

ACREAGE CORRECTION

APPROVED  
LORAIN CO.  
MAP DEPT.  
DATE 10-20-93  
PAGE 14 A  
BY CAROLYN FRANCIS  
VOID AFTER # 20508A

AC-CORRECTION DON'T SEE #19213

PUT IN FOR A-CORRECTION

3/18/94

20508A