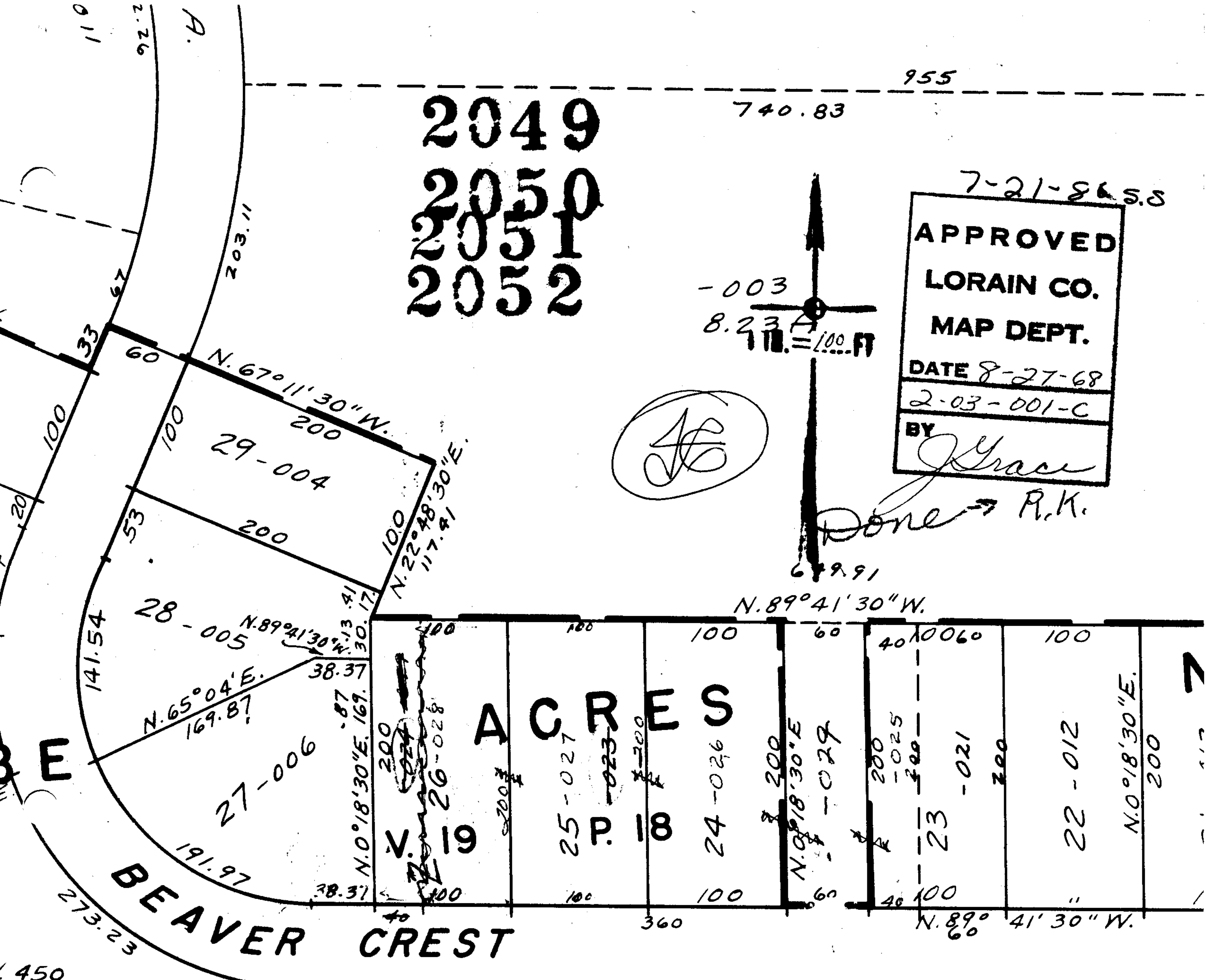


2049
2050
2051
2052

7-21-86 S.S.
APPROVED
LORAIN CO.
MAP DEPT.
DATE 8-27-68
2-03-001-C
BY *Grace*

(Signature)

Done → R.K.



ACRES

V. 19

P. 18

BEAVER CREST

-013
2.81A.

SEE 2-03-005-A

Pt. -
Pt. 3