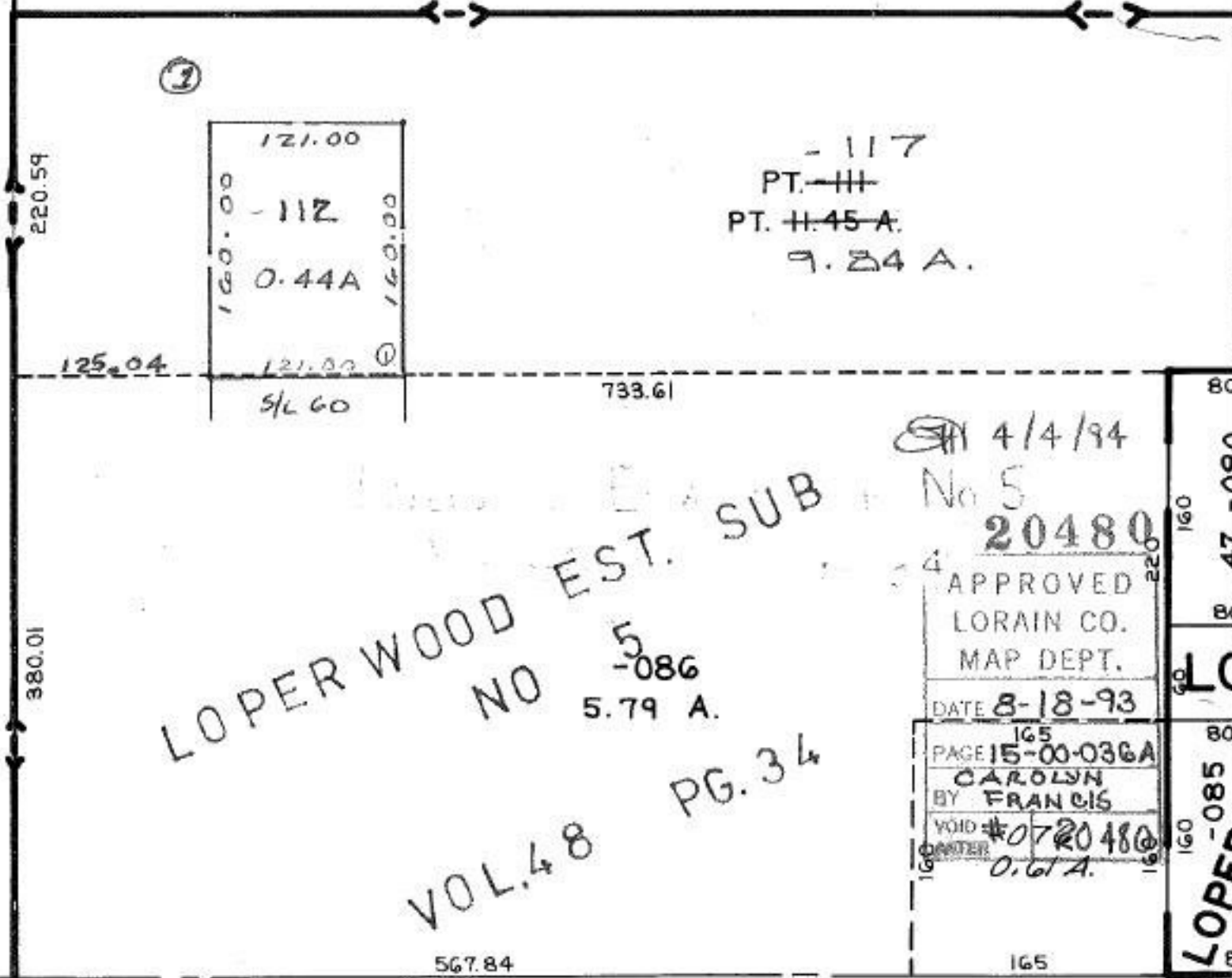


17.45A
 ① 0.29A
 11.16A
 ② 0.29A
 10.87A
 ③ 0.29A
 10.58A
 ④ 0.30A
 10.20A
 ⑤ .44A
 7.84A

15-00-036-000- PRIOR INST: 1177/742
 SURVEYED BY: KS ASSOC.
 1. 0.44 ac. C=1:INF.
 2,3,4. 0.29 ac. C=1: INF.
 5. 0.30 ac. C=1:119,393



LOPER WOOD EST. SUB
 NO 5
 -086
 5.79 A.

VOL. 48 PG. 34

4/4/94
 No 5
 20480

APPROVED
 LORAIN CO.
 MAP DEPT.
 DATE 8-18-93

PAGE 165
 15-00-036A
 CAROLYN
 BY FRANCIS
 VOID #0720480
 0.67 A.

SEE 15-00-04