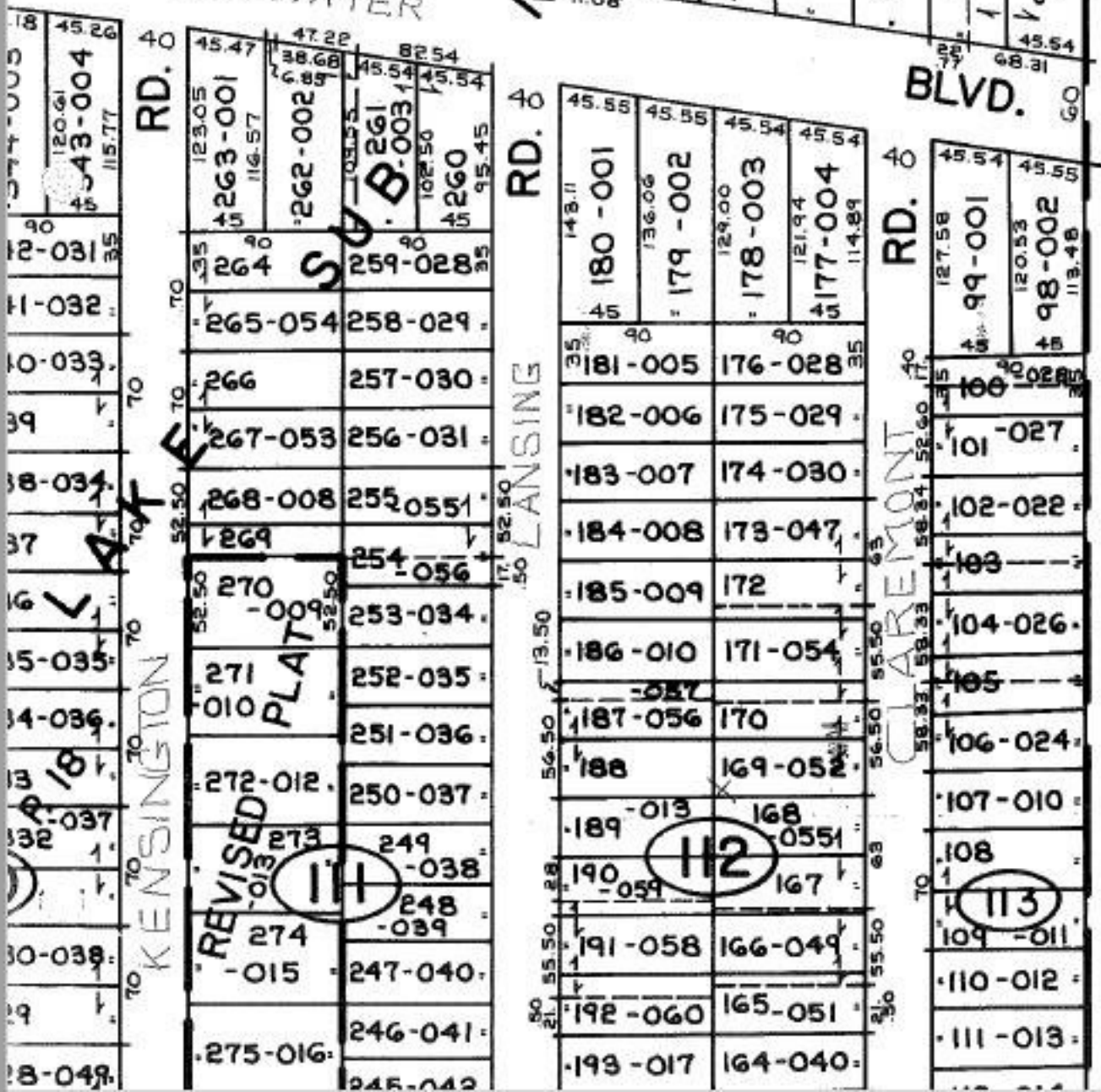
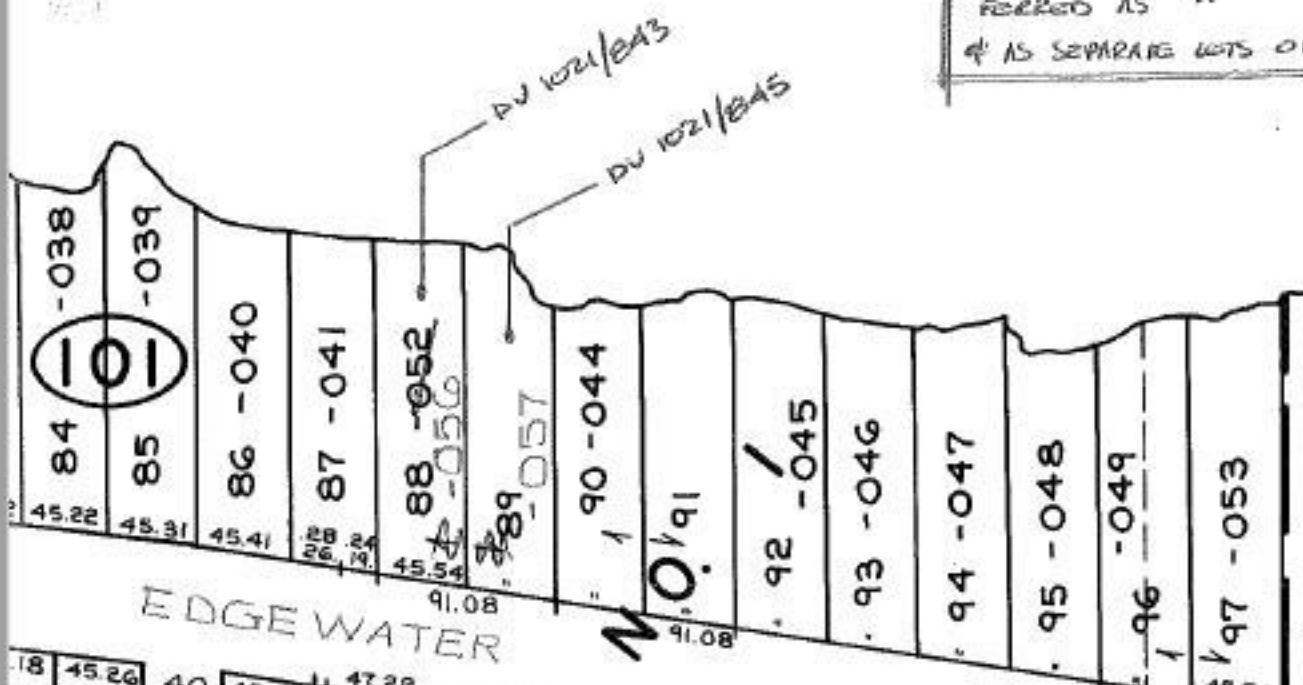


ERIE

PLATTED AS SEPARATE SUBJECTS, TRANS -
 REFERRED AS " " DU 10/1/84, 89, 95
 # IS SEPARATE LOTS ON SAME PAGE 0257 1/2
 706.707



101-003-101-052
 -056
 -057

9/23/93
 UN-COMBINATION
 #20474-A

00-004-A APPROVED
 LORAIN CO.
 MAP DEPT.
 DATE 8-4-93
 PAGE 1-00-003-B
 BY C. Francis/McNair
 VOID AFTER # 20474-A