

GRIGGS 2151 90
2151.40
530.07

SEE 20-05-023-A

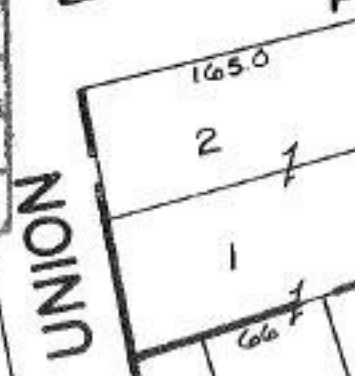
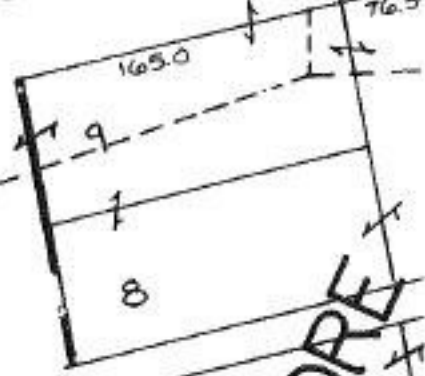
Pt.
Pt. -001 -035
113.10 A 111.10 A

20-05-023-101-
PRIOR INST: 728/145
SURVEYED BY: KS ASSOC.

101

ST.

CEMETERY
-001
2.50 A.



4/14/94
20447
APPROVED
LORAIN CO.
MAR DEPT.
DATE 7-16-93
PAGE 20-05-023-13
BY CAROLYN FRANCIS
VOID AFTER # 20447

195
634 -014
170
170
170

320
204

24

70

76.5

165.0

2

1

66