

96.97 A  
 5.00 A  
 91.97 A

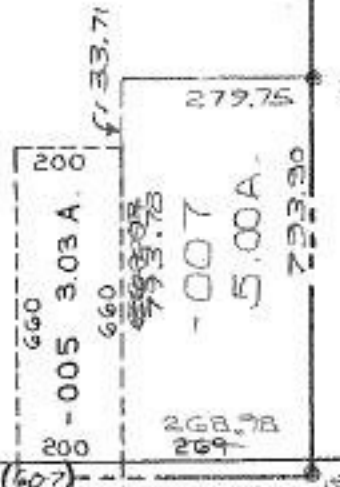
-001  
 22.00 A

-002  
 11.00 A

60

-005  
 -006  
 96.97 A  
 91.97 A

-003  
 40.00 A



19-01-060-000- PRIOR INST: 580/231  
 SURVEYED BY: BRUCE D. ECKELBERRY  
 C-1:439,050 REG. SURVEYOR

SM 4/13/94

20430

APPROVED LORAIN CO. MAP DEPT.
DATE 9-12-93
PAGE 19-H CAROLYN
BY FRANCIS
VOID AFTER # 20430

SMITH

DN