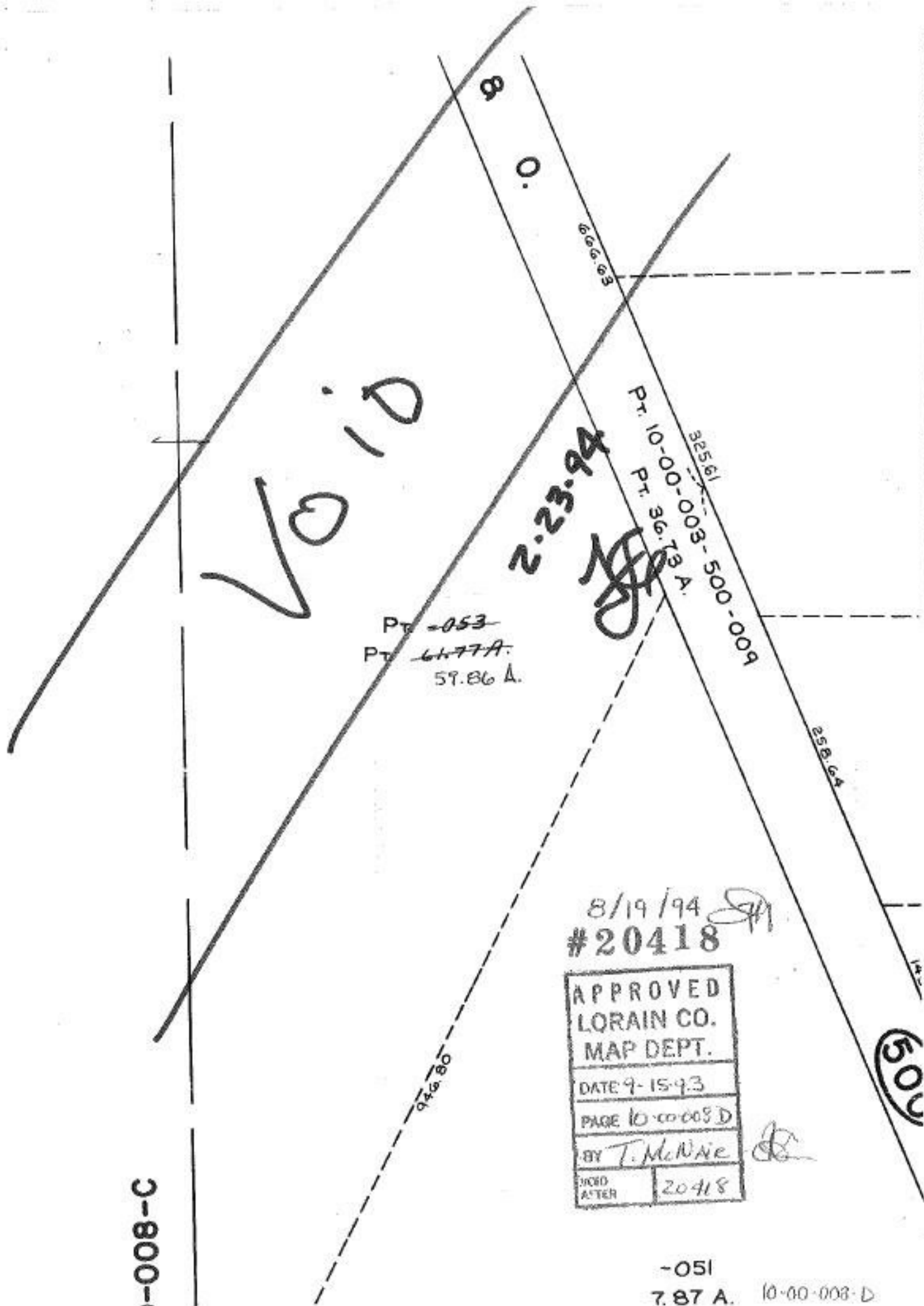


-008-C



500

2.23.94

Pt. -053
Pt. 6477A
59.86 A.

Pt. 10-00-008-500-009
Pt. 86.78 A.

8/19/94
#20418

APPROVED	
LORAIN CO.	
MAP DEPT.	
DATE 9-15-93	
PAGE 10-0008 D	
BY T. McWae	
ISSUED	20418
AFTER	

-051
7.87 A. 10-00-008-D