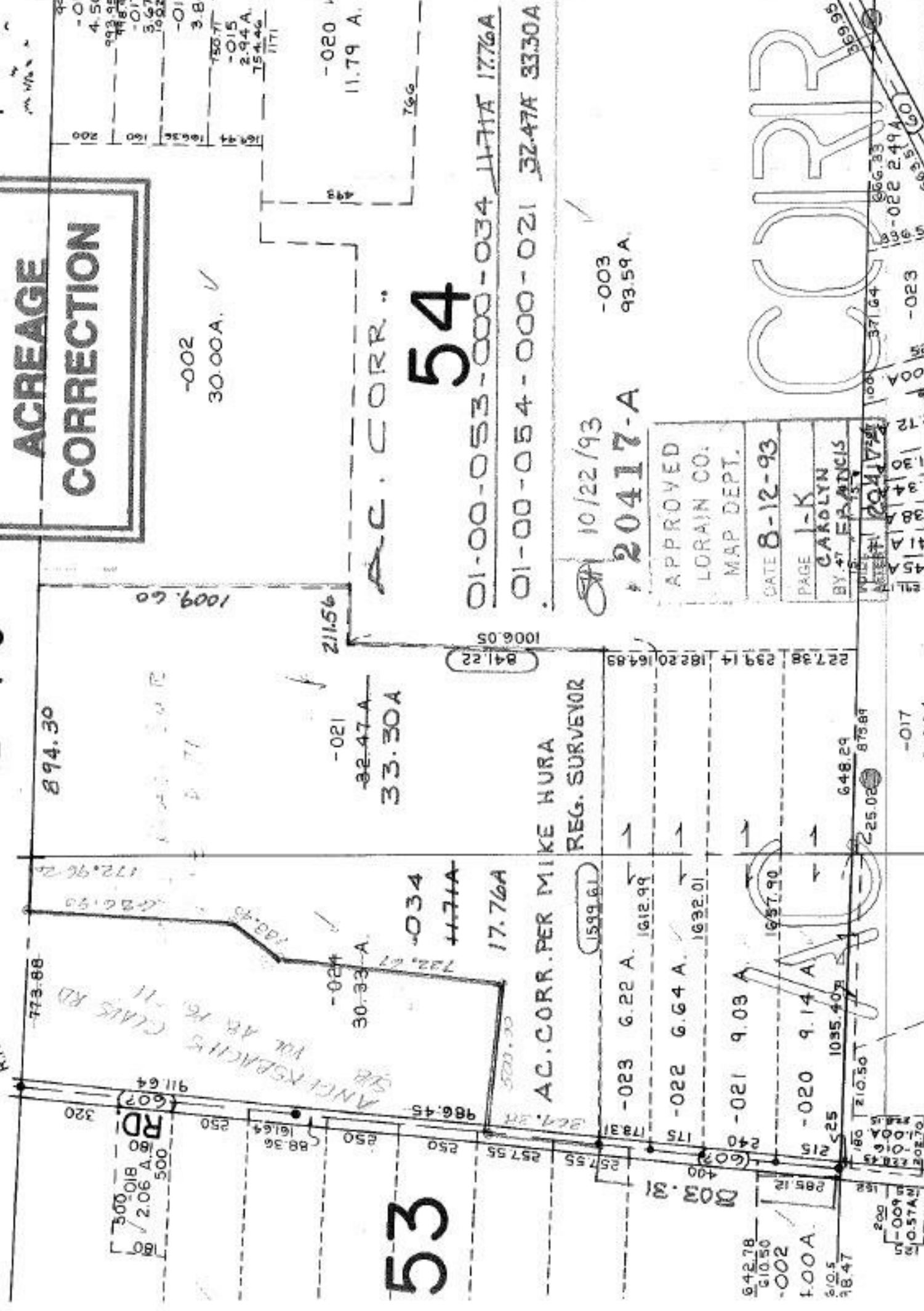


SEE I-G



**ACREAGE
CORRECTION**

-002
30.00A. ✓

AC. CORR.
54

01-00-053-000-034 11.71A 17.76A
01-00-054-000-021 32.47A 33.30A

10/22/93
20417-A -003 93.59A

APPROVED
LORAIN CO.
MAP DEPT.
DATE 8-12-93
PAGE 1-K
BY CAROLYN
FRANCIS

CORR

53

AC. CORR. PER MIKE HURA
REG. SURVEYOR

642.78	-023	6.22 A.	1612.99
610.50	-022	6.64 A.	1632.01
1.00A.	-021	9.09 A.	1637.90
610.5	-020	9.14 A.	1637.90
18.47	525	1035.40	648.29
	180	210.50	225.02
	150	100.00	873.89

-017
0.00A

-023

666.33
189-022 2.49A
609.55
150

169.44	-01	3.8	150.71
166.36	-015	2.94A	150.71
169.44	-01	3.67	150.71
166.36	-01	3.67	150.71
169.44	-01	3.67	150.71
166.36	-01	3.67	150.71

-020 ✓
11.79 A.

211.56

1006.05

841.22

-021

32.47A
33.30A

-034
11.71A
17.76A

1599.61

103.01

642.78
610.50

1.00A.

610.5
18.47

150-009
10.57A
202.70

-017
0.00A

-023

666.33
189-022 2.49A
609.55
150