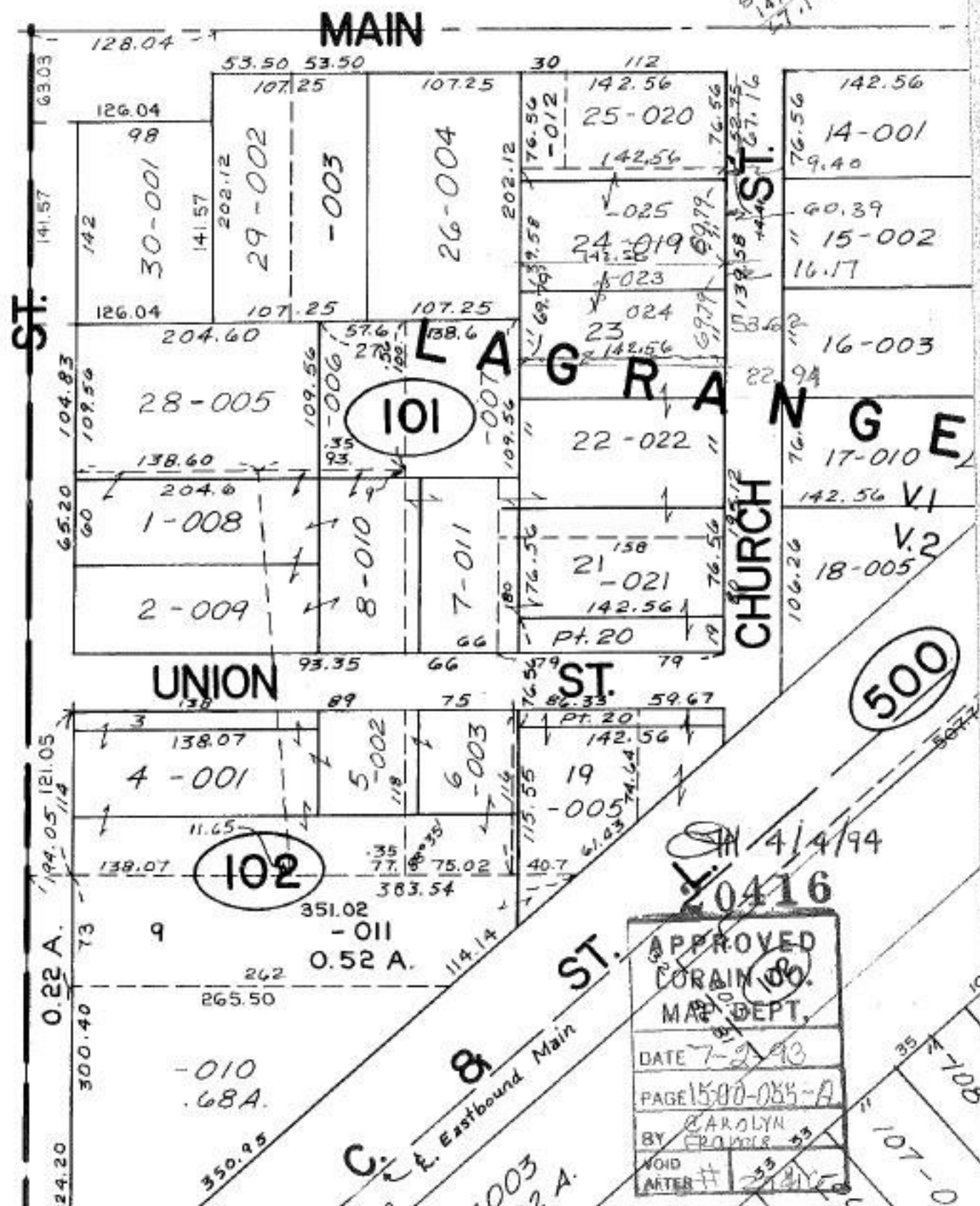


SEE

52.75
14.41
37.16



APPROVED
CORAIN 100.
MAY DEPT.
DATE 7-2-93
PAGE 1500-085-A
BY CAROLYN
FRANKLIN
VOID AFTER # 233

4/4/94
20416

C. & A. Eastbound Main

0.22 A.

0.52 A.

0.68 A.

500