

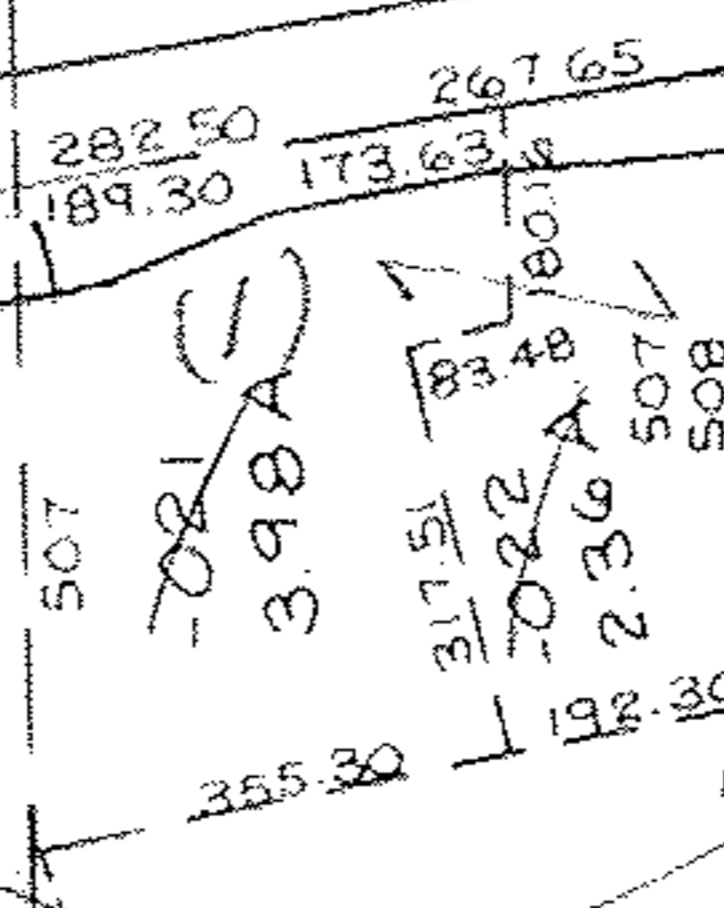


(LIBERTY AVE) SEE 1-00-006-A

RD. (VARIABLE)

PARCEL #1  
 143.00  
 (-) 6.34  
 136.66  
 (+) 37.14  
 101.50  
 (+) 3.17  
 98.33  
 (-) 2.35  
 95.98  
 (+) 2.97  
 93.01 vs. 95.52  
 DEED ACRE. ON DEED  
 in Desc.

PARCEL #2  
 OK AS IS



Pt. - 013 30.00  
 EXT. 024 3.98  
 022 2.36  
 36.34

6

102

SEE NOTE BELOW

DEED  
 ACRE. ON  
 DEED

-034  
 40.06A

Pt. - 029  
 Pt. 27.20A

-013  
 37.16A

DEED FILED  
 3-23-93  
 BY O.R. 677/960

DEED WAS  
 CORR # 16538/  
 DV. 44V/21A

1205.74  
 1204.5  
 1193

553 544.50

-001  
 24.22A

Pt. OF  
 - 013  
 7.16A

LORAIN CITY CORP. LINE  
 SIN 7/29/93  
 20323 A

APPROVED  
 LORAIN CO.  
 MAP DEPT.  
 DATE 5 27 93  
 PAGE 1-C  
 BY CAROLYN FRANCIS  
 VOID AFTER # 20323 A

002 95.52 A	104.01 A
009 1.63 A	7.16 A
008 1.54 A	111.17 A
006 2.35A	36.34 A
007 2.97A	147.51 A
104.01A	

SEE 16538  
 ACRE. CORR  
 PER DEEDS

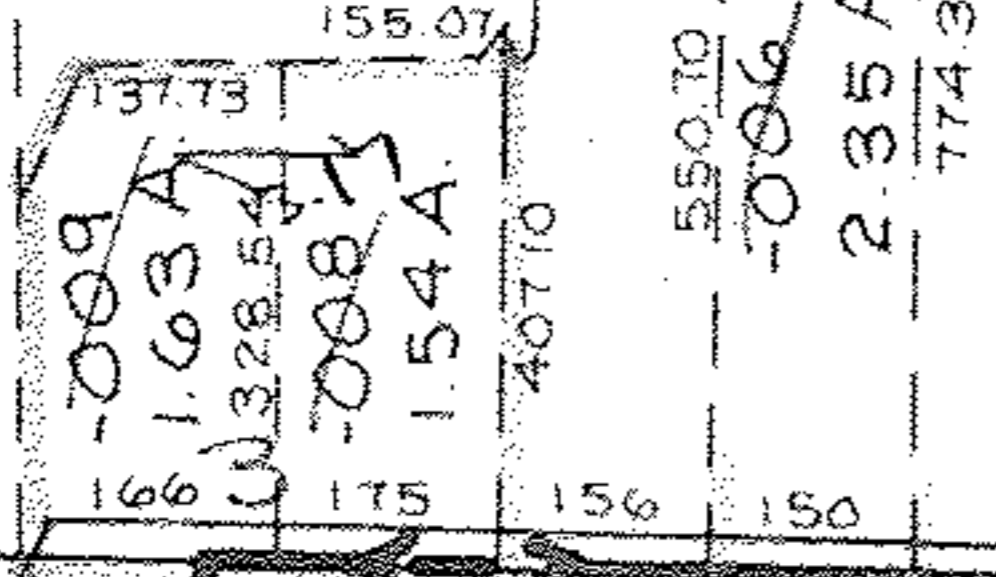
-002  
 95.52 A

NOTE - THIS DEED DESCRIBED 2 PARCELS WITH  
 ACREAGE THAT MATCHED THE REGISTER  
 & DUPLICATE BUT HAD MANY EXCEPTIONS

& RECD UPDATE  
 LEGAL IN TRANSFER  
 OFFICE. IT  
 WAS REVIEWED  
 ON PRIOR TRANSFER  
 1/13/86.

277.20 226.38

-003  
 6.57A  
 914.10  
 -004  
 5.68A



5  
 -007  
 2.97A  
 832.44

S. LINE OF RD. 820.24 RD.

VERMILION CITY CORP. LINE  
 LORAIN CITY CORP. LINE

BAUMHART