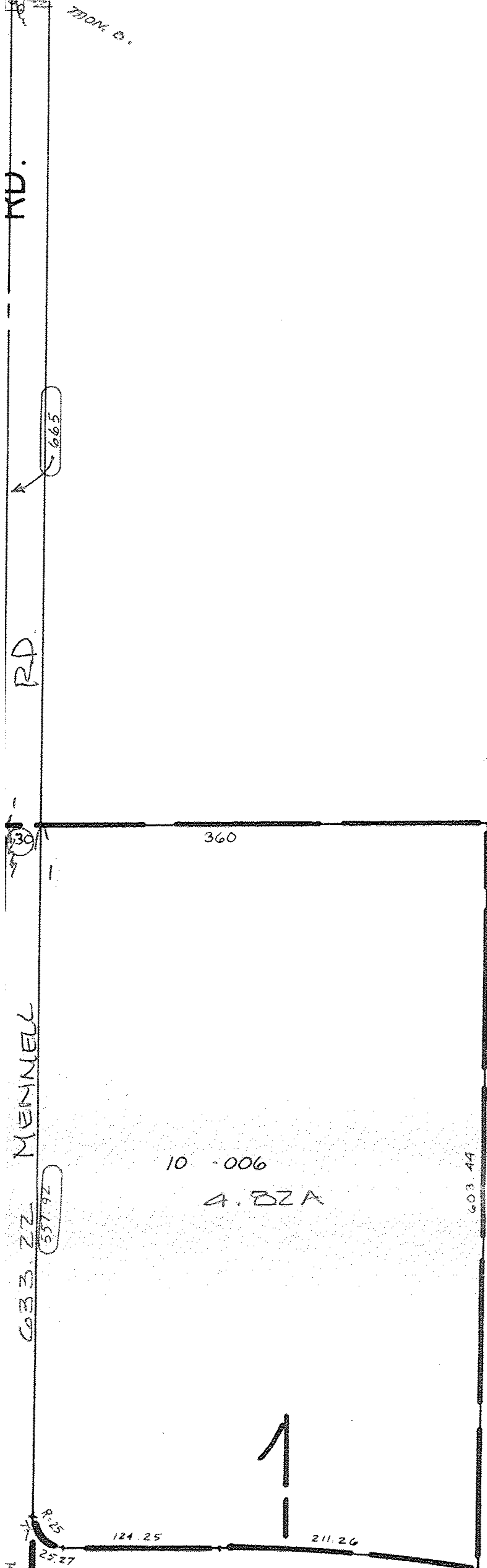
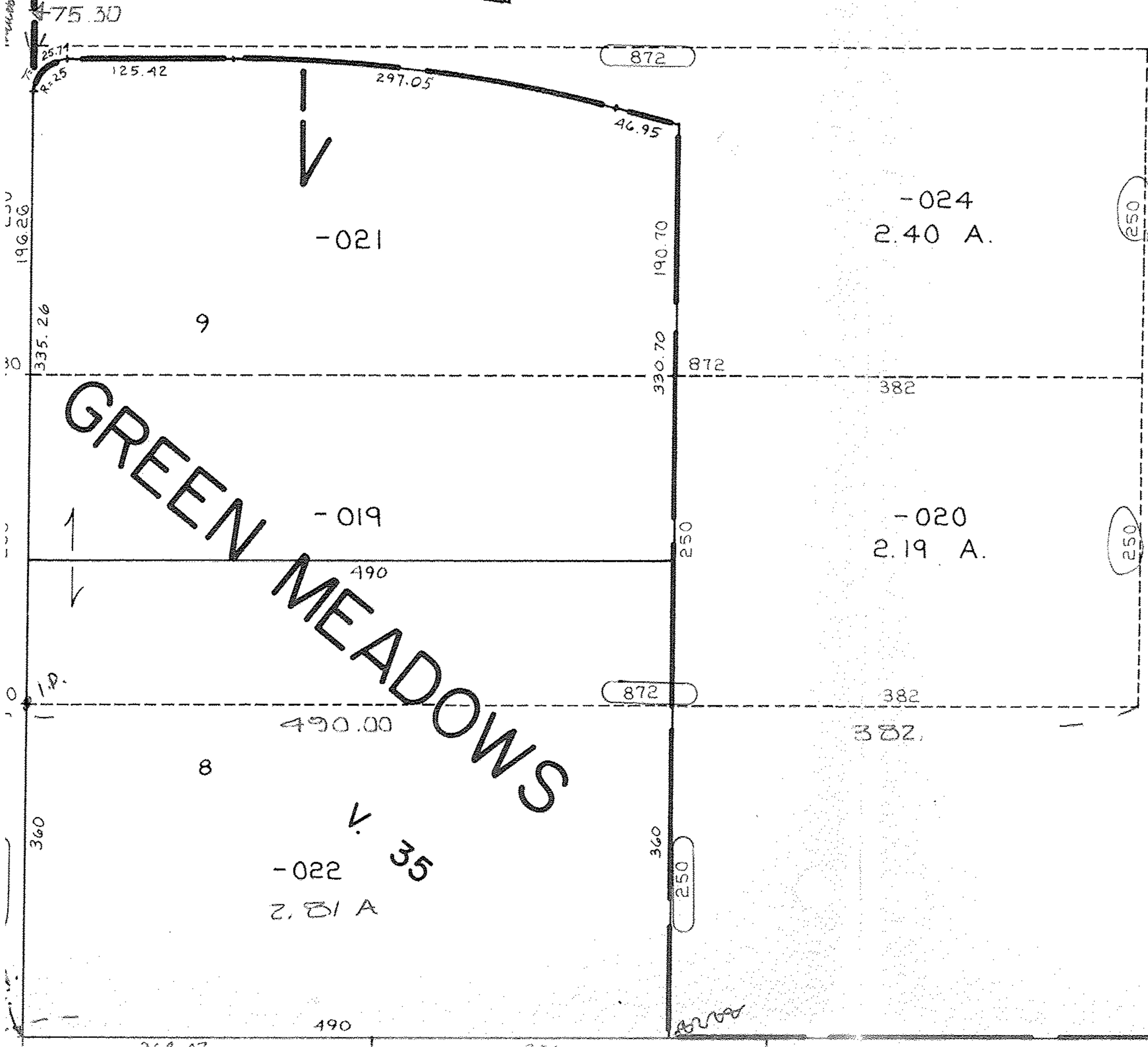


N. LINE OF 64



4.10 4.82A 115.30  
 4.8 2.81A 7.63 84  
 7.63A 107.67  
  
 7.63A  
 102.43A  
 1.03A  
~~111.09A~~ SURVEY BY  
 AC. CORR. PER (KS A)  
 C = 1:2990,647  
  
 111.09A  
 7.63A  
~~103.40A~~  
107.67

-028  
 PT. -027  
 PT. 102.43 A. 103.46  
~~111.09A~~  
 107.67 AC. CORR.  
 C = 1:2990,647



4/21/93  
 20308

APPROVED  
 LORAIN CO.  
 MAP DEPT.  
 DATE 3-31-93  
 PAGE 16-00-004A  
 BY CAROLYN  
 FRANKS  
 VOID  
 AFTER 7-20-98

