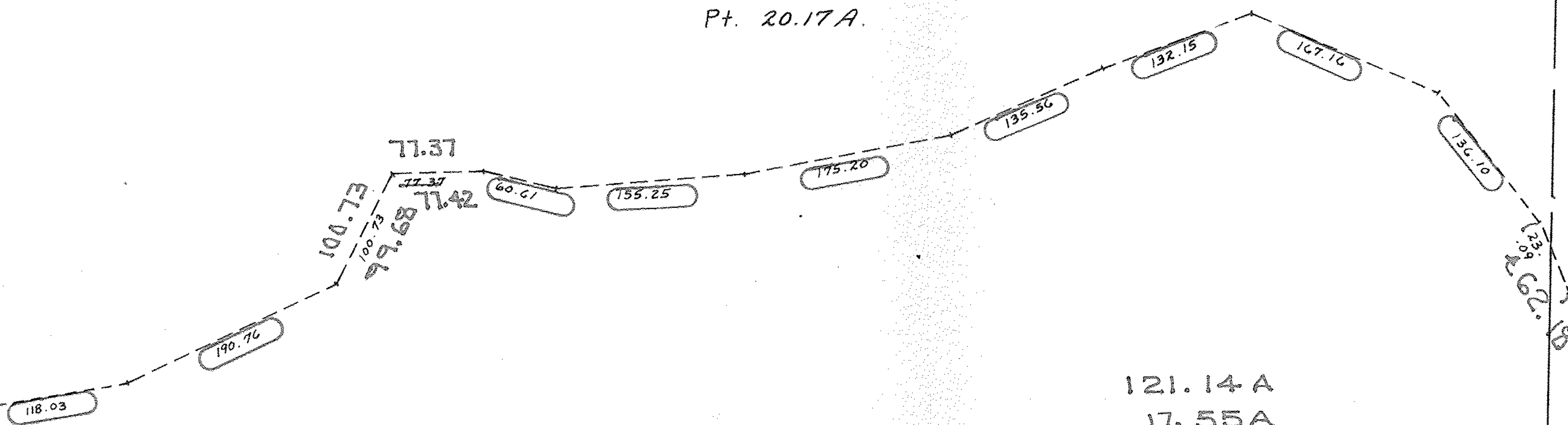


SEE 2-02-009-A

Pt. -013  
Pt. 20.17A.



121.14 A  
 17.55 A  
 -----  
 103.59 A  
 -----  
 103.52 A AC. CORR.

-069  
 Pt. ~~067~~  
 Pt. ~~121.14~~  
~~103.59A~~  
 103.52A

AC. CORR PER SURVEY BY  
 N.R. HURA REG. SURVEYOR

SA 1/6/93  
 20179

APPROVED  
 LORAIN CO.  
 MAP DEPT.  
 DATE 12-9-92  
 PAGE 2-02-002-A  
 BY CAROLYN  
 FRANCIS  
 VOID  
 AFTER # 20179

02-02-002-000- PRIOR INST: O.R.458/212  
 SURVEYED BY: N.R. HURA REG. SURVEYOR  
 C=1:235,679

2389.62