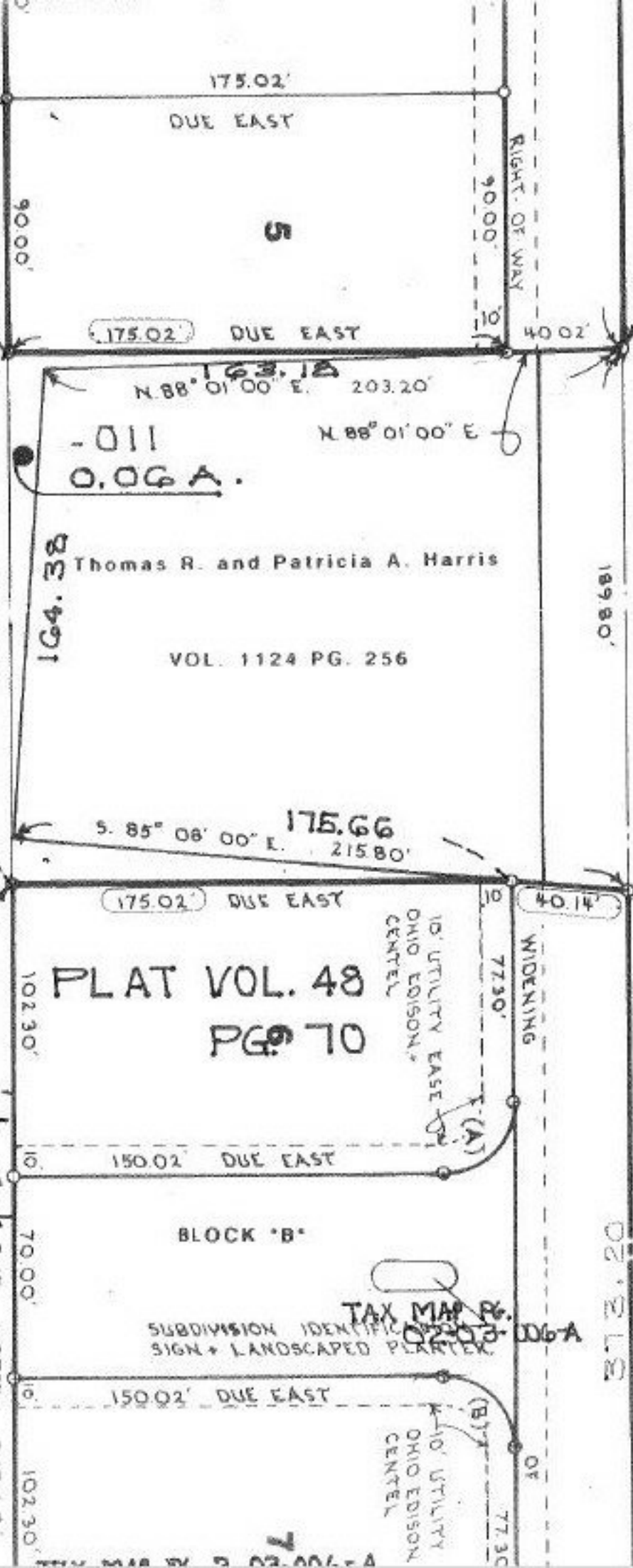


N. Ma
Drive

Point

20174

APPROVED
LORAIN CO.
MAP DEPT.
DATE 12-8-92
PAGE PLAT VOL 48 B 70
BY CAROLYN FRANCIS
VOID # 20174



A.S.N. Enterprises Vol. 1410 Pg. 396

ACCEPTANCE AND DEDICATION

WE THE UNDERSIGNED OWNERS, VICTOR J. NARDINI AND MICHAEL P. SLIM AND JAMES J. ABRAHAM HEREBY CERTIFY THAT THE ATTACHED PLAT CORRECTLY REPRESENTS THE SAID MEADOWS SUBDIVISION, A

~~108.04A~~
~~0.06A~~
~~108.04A~~

124.50

164.38

-011
0.06A.

Thomas R. and Patricia A. Harris

VOL. 1124 PG. 256

PLAT VOL. 48
PG. 70

BLOCK "B"

SUBDIVISION IDENTIFICATION SIGN + LANDSCAPED PLANTER.

TAX MAP # 02-03-006-A

-012
-010

~~108.04A~~
~~108.04A~~

108.01A
107.95A

102.30'
70.00'
102.30'

378.20'

175.02'

DUE EAST

175.02' DUE EAST

N. 88° 01' 00" E. 203.20'

N. 88° 01' 00" E

S. 85° 08' 00" E. 175.66
215.80'

175.02' DUE EAST

150.02' DUE EAST

150.02' DUE EAST

90.00'

RIGHT OF WAY

40.02'

189.80'

40.14'

WIDENING

77.30'

(A)

(B)

10' UTILITY EASE
OHIO EDISON,
CENTRAL

10' UTILITY
OHIO EDISON
CENTRAL

OR 10' L.S.

373