

(.65 A.)

264.40

043

39 A.

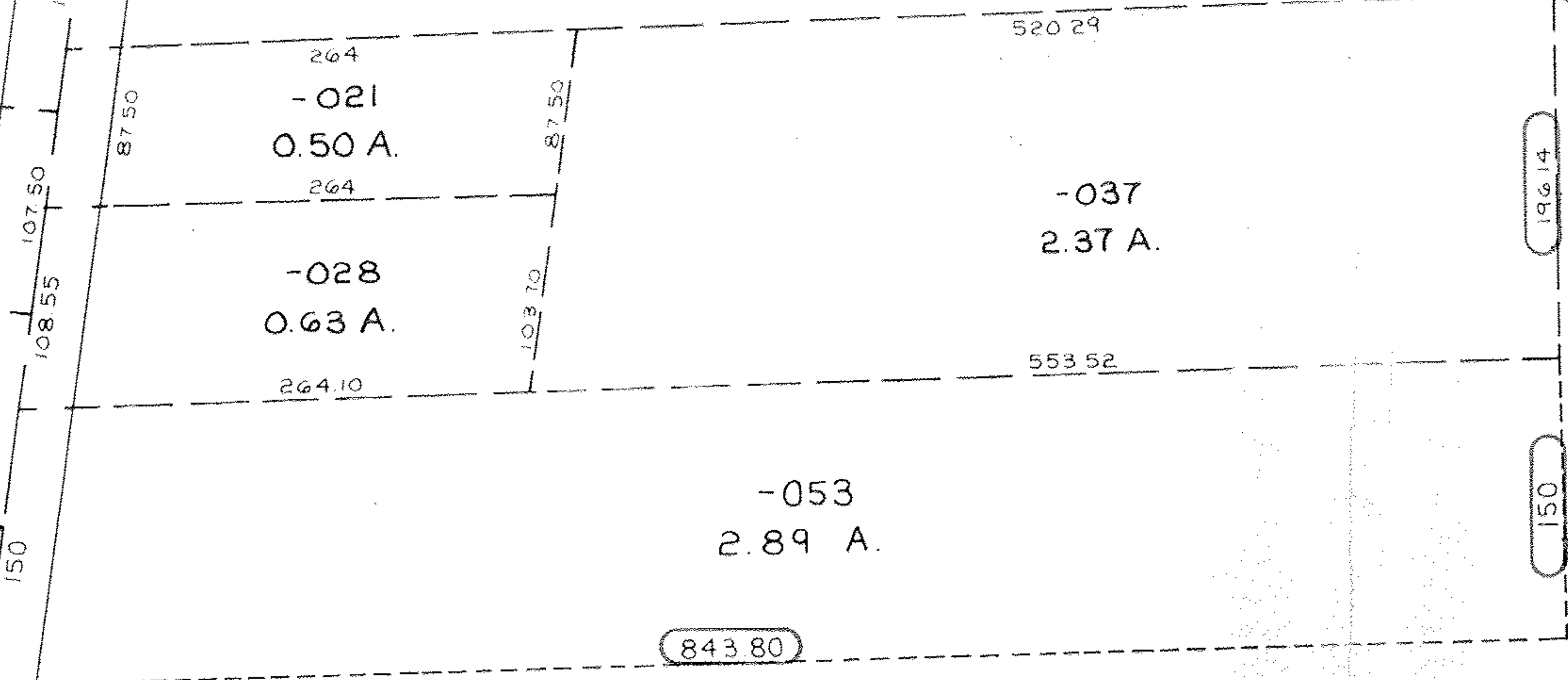
042

A.

0

A.

SOUKERR
180
19254



COMB.

023 27.50 A
 054 25.61 A
53.11 A

09-00-002-000

PRIOR INSTS:

PT. -054
PT. 25.61 A

PT. -055
PT. 53.11 A.

11/8/93
20161

APPROVED
 LORAIN CO.
 MAP DEPT.
 DATE 12-2-92
 PAGE 9-00-002-A
 BY CAROLYN
 FRANCIS
 VOID AFTER # 20161

PT. -023
PT. 27.50 A. DUP
PT. 28.50 MAP

COMB.

230.00

2350.70

2350.70