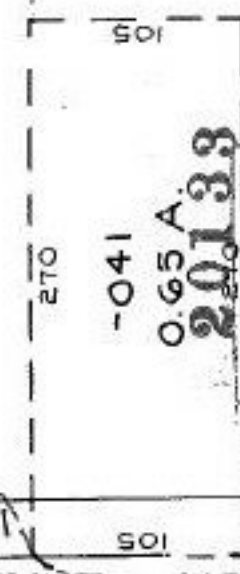


MAP CORR. PARCELS
DRAWN WRONG

-091
~~-089~~
18.34 A.
17.57 A.

101

07-00-023-101- PRIORITY INST: 1202/613
DANE A. HAPONEK REG. SURVEYOR
C-1: INF.



APPROVED *SA*
LORAIN CO.
MAP DEPT.
DATE 10-20-92
PAGE 7-00-023 C
CARRINGTON
BY CARRINGTON
VOID # 108915
AFTER 0.62 A.

11/9/92

SEE 7-00-026-D

WOOSTER AVON LAKE RD

MAP OUT OF SCALE NEED UPDATED

-082
0.79 A

-024
0.03 A

254.70