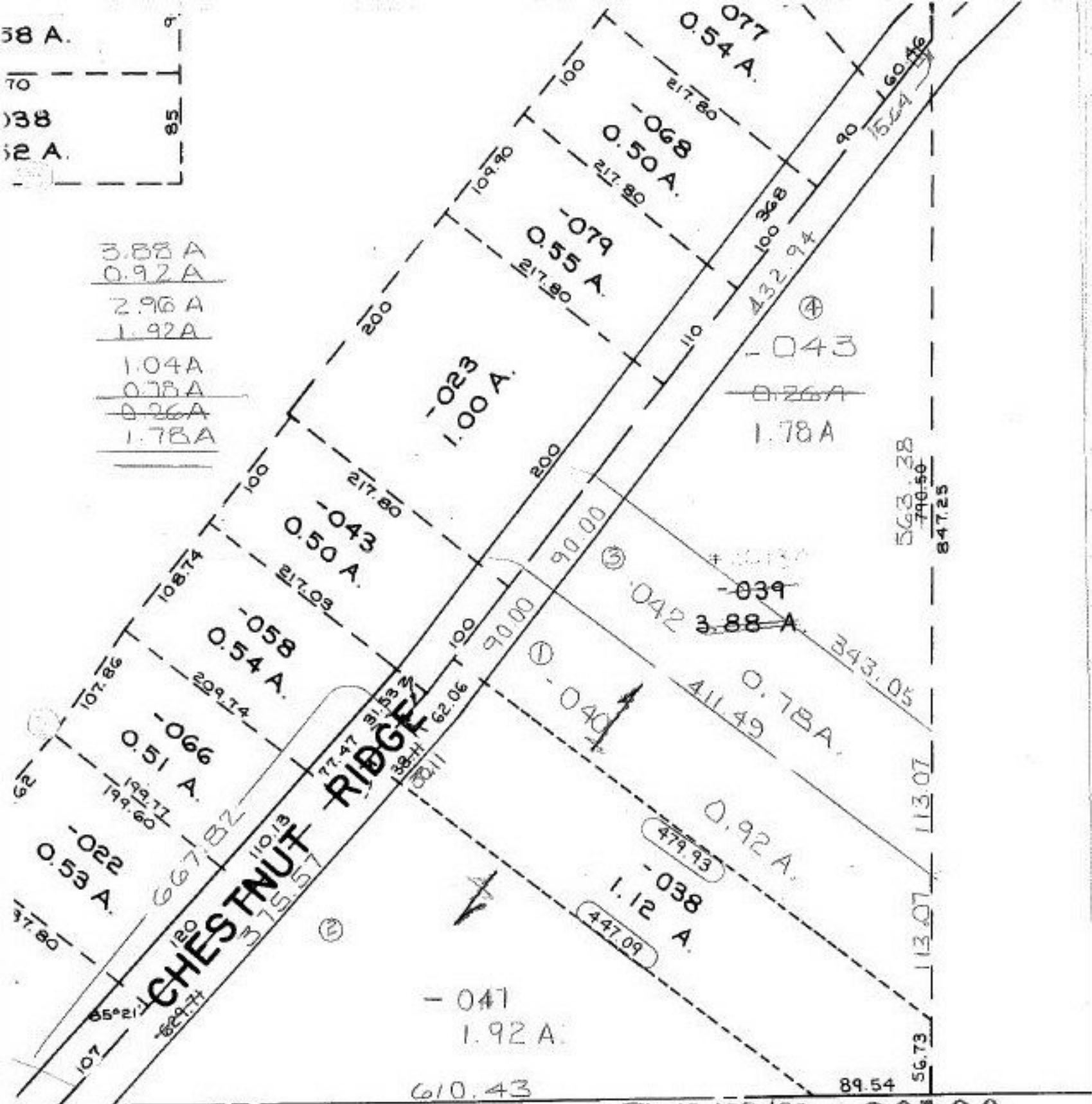


- 3.88 A
- 0.92 A
- 2.96 A
- 1.92 A
- 1.04 A
- 0.78 A
- 0.26 A
- 1.78 A



254.14
107

07-00-023-102-
 PRIOR INST: O.R.314/144
 SURVEYED BY: DANE A. HAPONEK REG. SURV.
 C=1:304,480 422,408 266,401
 137,020

12/29/92
 SEE 20130
 7-00-024-

APPROVED
 LORAIN CO.
 MAP DEPT.
 DATE 10-28-92
 PAGE 7-00-023-0
 BY CAROLYN
 FRANCIS
 VOID AFTER # 20130