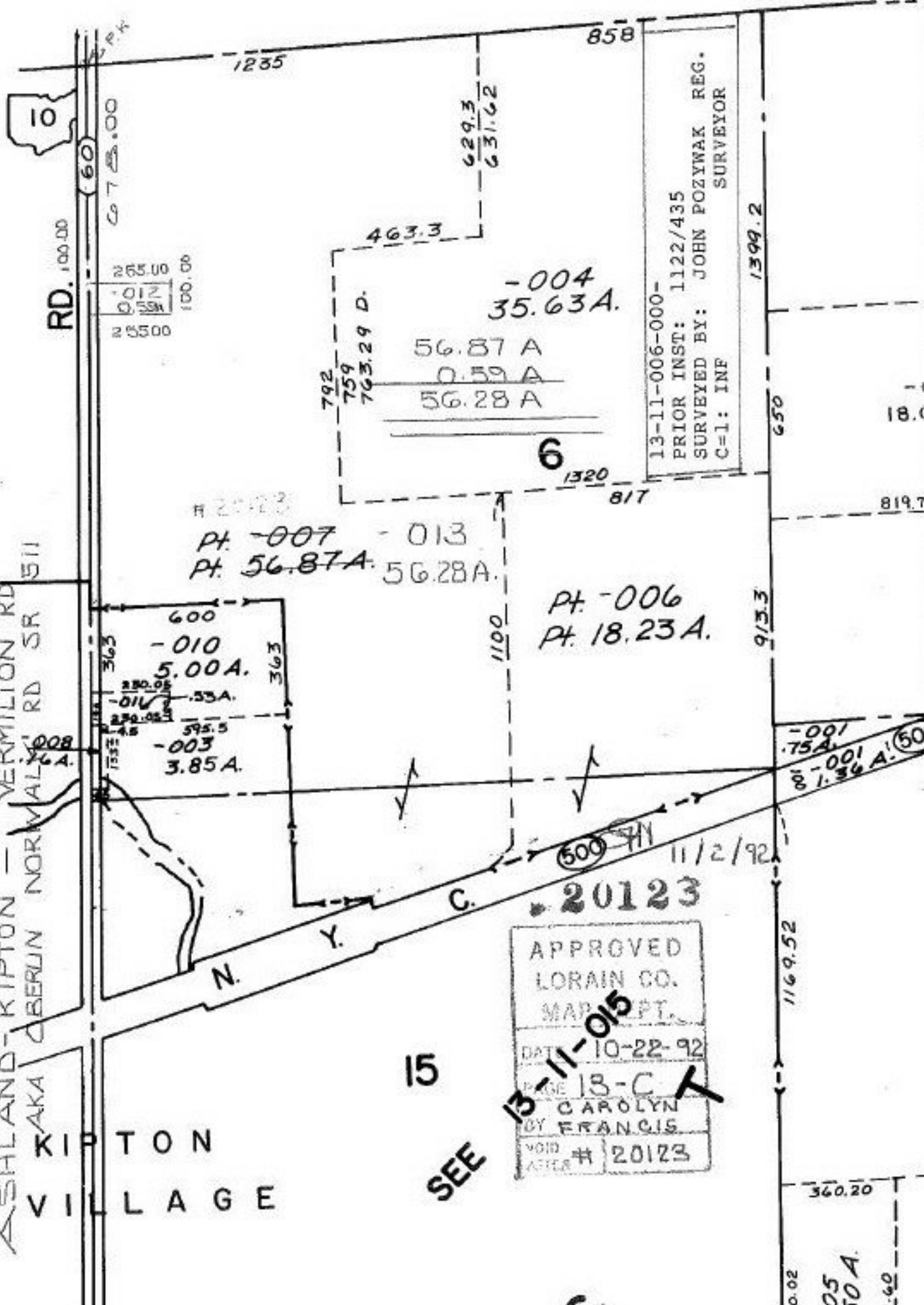


ASHLAND - KIPTON - VERMILION RD  
 KIP T O N  
 V I L L A G E



13-11-006-000-  
 PRIOR INST: 1122/435  
 SURVEYED BY: JOHN POZYWAK REG.  
 SURVEYOR  
 C-1: INF

APPROVED  
 LORAIN CO.  
 MAP DEPT.  
 DATE 10-22-92  
 PAGE 13-C  
 BY CAROLYN  
 FRANCIS  
 VOID AFTER # 20123

SEE 15

20123