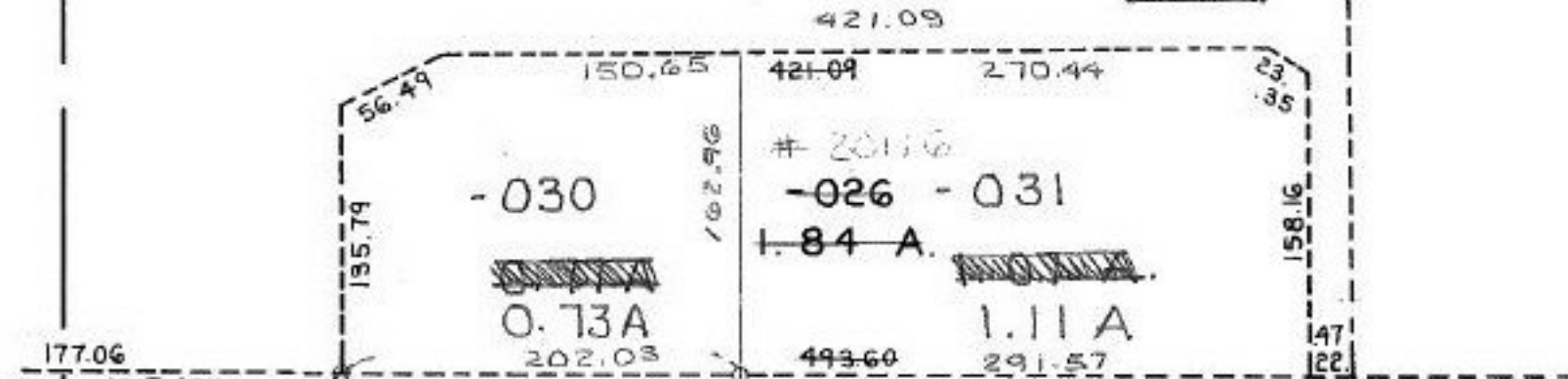


1.84A
 0.77A
 1.07B

O.L. 174

PT.-029
 PT. 12.69 A.

06-24-174-000-
 PRIOR INST: O..R 449/543
 SURVEY MAP BY: KS ASSOC. C=1:68,209.



177.06
 1515.43
 368.40
 TO ANGLE POINT
 1555.60
 578.35

11/9/92

20116

PT.-023
 PT. 2.24 A

PT. -019
 PT. 3.98 A.

350.85 APPROVED
 LORAIN CO.
 MAP DEPT.
 DATE 10-20-92
 PAGE G-48
 BY CAROLYN FRANCIS
 VIND #20116
 AFTER